

Anti- Amyloid β A4 (Phospho-Thr743/668) Polyclonal Antibody



<u>Catalog No.</u>	<u>Size</u>
A100004-01	50 μ l
A100004-02	100 μ l

Specificity	Anti- Amyloid β A4 (Phospho-Thr743/668) (human Mouse Rat)
Source	Rabbit Polyclonal
Application	WB ELISA IHC IF
Form	Liquid, 1 mg/ml

Specificity and Sensitivity

Swiss-Prot No.: P05067

Other Names: A4, ABPP, AD1, APP, APPI, Alzheimer's disease amyloid protein, Amyloid beta A4 protein precursor, Beta-amyloid protein 40, Beta-amyloid protein 42, C31, C83, CVAP, Cerebral vascular amyloid peptide, Gamma-CTF(50), Gamma-CTF(57), Gamma-CTF(59), P3(40), P3(42), PN-II, PreA4, Protease nexin-II, Soluble APP-alpha (S-APP- alpha), Soluble APP-beta (S-APP-beta)

Specificity and Sensitivity

Amyloid β A4 (phospho-Thr743/668) antibody detects endogenous levels of Amyloid β A4 only when phosphorylated at threonine 743.

Source and Purification

The antiserum was produced against synthesized phosphopeptide derived from human Amyloid β A4 around the phosphorylation site of threonine 743 (A-V-T^P-P-E). The antibody was affinity-purified from rabbit antiserum by affinity-chromatography using epitope-specific immunogen.

Application Notes

Optimal working dilutions should be determined experimentally by the investigator. Suggested starting dilutions are as follows:

WB: 1:500~1:1000	IHC: 1:50~1:100
IF: 1:100~1:500	ELISA: 1:10000

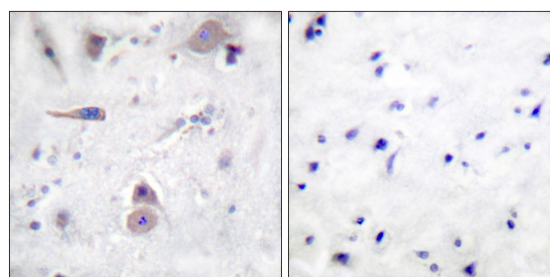
Storage Buffer

Rabbit IgG in phosphate buffered saline (without Mg²⁺ and Ca²⁺), pH 7.4, 150mM NaCl, 0.02% sodium azide and 50% glycerol.

Storage Instructions

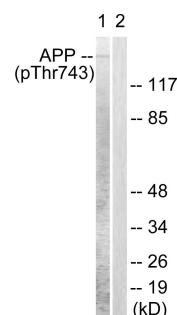
Stable for 1 year at -20°C from date of shipment. For maximum recovery of product, centrifuge the original vial after thawing and prior to removing the cap. Aliquot to avoid repeated freezing and thawing. Aliquot will be stable at 4°C for 3 months.

Images



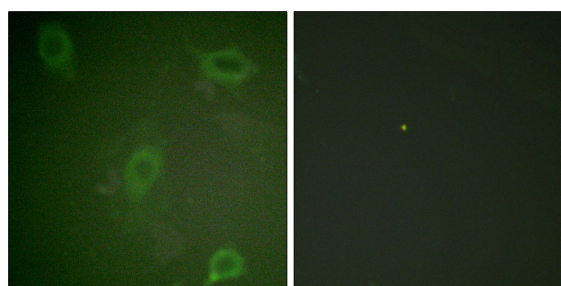
P-peptide - +

Immunohistochemical analysis of paraffin-embedded human brain tissue using Amyloid β A4 (phospho-Thr743/668) antibody.



P-peptide - +

Western blot analysis of extracts from HeLa cells, using Amyloid β A4 (phospho-Thr743/668) antibody.



P-peptide - +

Immunofluorescence analysis of HeLa cells, using Amyloid β A4 (phospho-Thr743/668) antibody.