

# Anti-MAPKAPK2(Phospho-Thr334)Polyclonal Antibody



Catalog No.	Size
A100008-01	50 µl
A100008-02	100 µl

<b>Specificity</b>	Anti- MAPKAPK2 (Phospho-Thr334) (human Mouse Rat)
<b>Source</b>	Rabbit Polyclonal
<b>Application</b>	WB ELISA IHC
<b>Form</b>	Liquid, 1 mg/ml

## Specificity and Sensitivity

Swiss-Prot No.: P49137

**Other Names:** EC 2.7.11.1, MAP kinase-activated protein kinase 2, MAPK-activated protein kinase 2, MAPK2, MAPKAP kinase 2, MAPKAPK-2, MAPKAPK2, RPS6KC1, kinase MAPKAPK2

## Specificity and Sensitivity

MAPKAPK2 (Phospho-Thr334) antibody detects endogenous levels of MAPKAPK2 only when phosphorylated at threonine 334.

## Source and Purification

The antiserum was produced against synthesized phosphopeptide derived from human MAPKAPK2 around the phosphorylation site of threonine 334 (P-Q-T<sup>P</sup>-P-L).

The antibody was affinity-purified from rabbit antiserum by affinity-chromatography using epitope-specific immunogen.

## Application Notes

Optimal working dilutions should be determined experimentally by the investigator. Suggested starting dilutions are as follows:

WB: 1:500~1:1000 IHC: 1:50~1:100

ELISA: 1:20000

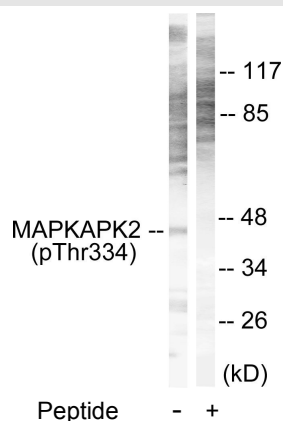
## Storage Buffer

Rabbit IgG in phosphate buffered saline (without Mg<sup>2+</sup> and Ca<sup>2+</sup>), pH 7.4, 150mM NaCl, 0.02% sodium azide and 50% glycerol.

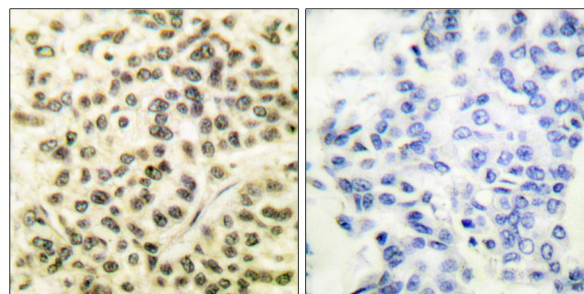
## Storage Instructions

Stable for 1 year at -20°C from date of shipment. For maximum recovery of product, centrifuge the original vial after thawing and prior to removing the cap. Aliquot to avoid repeated freezing and thawing. Aliquot will be stable at 4°C for 3 months.

## Images



Western blot analysis of extracts from NIH/3T3 cells, using MAPKAPK2 (Phospho-Thr334) antibody.



Immunohistochemical analysis of paraffin-embedded human breast carcinoma tissue using MAPKAPK2 (Phospho-Thr334) antibody.

Immunohistochemical analysis of paraffin-embedded human breast carcinoma tissue using MAPKAPK2 (Phospho-Thr334) antibody.