

Anti- PKC ζ (Phospho-Thr410) Polyclonal Antibody



<u>Catalog No.</u>	<u>Size</u>
A100009-01	50 μ l
A100009-02	100 μ l

Specificity	Anti- PKC ζ (Phospho-Thr410) (human Mouse Rat)
Source	Rabbit Polyclonal
Application	WB ELISA IHC IF
Form	Liquid, 1 mg/ml

Specificity and Sensitivity

Swiss-Prot No.: Q05513

Other Names: EC 2.7.11.13, KPCZ, PKC-zeta, PKC2, PRKCZ, Protein kinase C zeta type, kinase PKC-zeta, nPKC-zeta

Specificity and Sensitivity

PKC ζ (phospho-Thr410) antibody detects endogenous levels of PKC ζ only when phosphorylated at threonine 410.

Source and Purification

The antiserum was produced against synthesized phosphopeptide derived from human PKC ζ around the phosphorylation site of threonine 410 (T-S-T^p-F-C). The antibody was affinity-purified from rabbit antiserum by affinity-chromatography using epitope-specific immunogen.

Application Notes

Optimal working dilutions should be determined experimentally by the investigator. Suggested starting dilutions are as follows:

WB: 1:500~3000	IHC: 1:50~100
IF: 1:100~1:500	ELISA: 1:20000

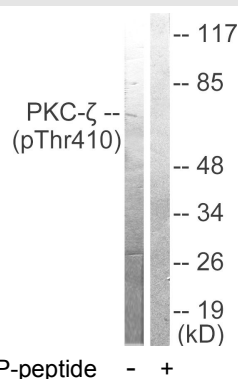
Storage Buffer

Rabbit IgG in phosphate buffered saline (without Mg²⁺ and Ca²⁺), pH 7.4, 150mM NaCl, 0.02% sodium azide and 50% glycerol.

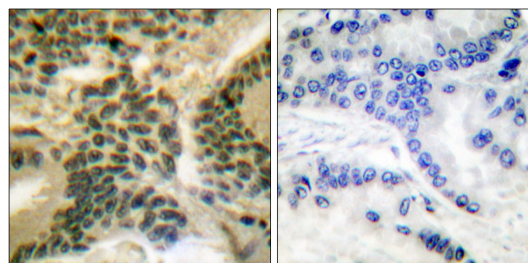
Storage Instructions

Stable for 1 year at -20°C from date of shipment. For maximum recovery of product, centrifuge the original vial after thawing and prior to removing the cap. Aliquot to avoid repeated freezing and thawing. Aliquot will be stable at 4°C for 3 months.

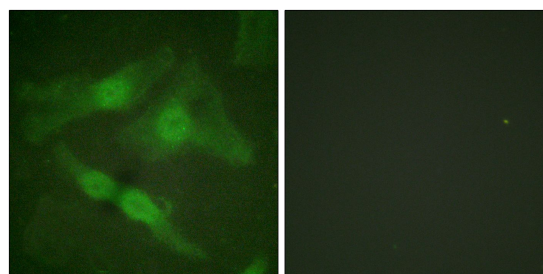
Images



Western blot analysis of extracts from NIH/3T3 cells treated with PMA (125ng/ml, 30mins), using PKC ζ (phospho-Thr410) antibody.



Immunohistochemical analysis of paraffin-embedded human lung carcinoma tissue using PKC ζ (phospho-Thr410) antibody.



Immunofluorescence analysis of HeLa cells, using PKC ζ (phospho-Thr410) antibody.