

# Anti- Shc (Phospho-Tyr349) Polyclonal Antibody



<u>Catalog No.</u>	<u>Size</u>
A100010-01	50 µl
A100010-02	100 µl

<b>Specificity</b>	Anti- Shc (Phospho-Tyr349) (human Mouse Rat)
<b>Source</b>	Rabbit Polyclonal
<b>Application</b>	WB ELISA IHC
<b>Form</b>	Liquid, 1 mg/ml

## Specificity and Sensitivity

**Swiss-Prot No.:** P29353

**Other Names:** SH2 domain protein C1, SHC, SHC-transforming protein 1, SHCA, Src homology 2 domain-containing-transforming protein C1

## Specificity and Sensitivity

Shc (phospho-Tyr349) antibody detects endogenous levels of Shc only when phosphorylated at tyrosine349.

## Source and Purification

The antiserum was produced against synthesized phosphopeptide derived from human Shc around the phosphorylation site of tyrosine349 (H-Q-Y<sup>P</sup>-Y-N).

The antibody was affinity-purified from rabbit antiserum by affinity-chromatography using epitope-specific immunogen.

## Application Notes

Optimal working dilutions should be determined experimentally by the investigator. Suggested starting dilutions are as follows:

WB: 1:500~1000      IHC: 1:50~100  
ELISA: 1:10000

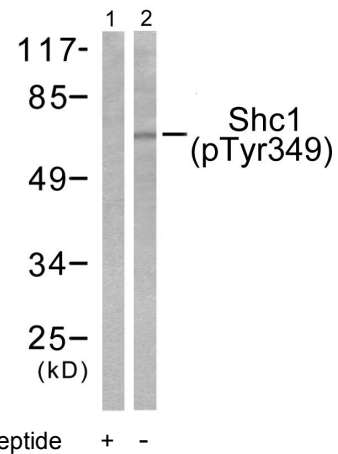
## Storage Buffer

Rabbit IgG in phosphate buffered saline (without Mg<sup>2+</sup> and Ca<sup>2+</sup>), pH 7.4, 150mM NaCl, 0.02% sodium azide and 50% glycerol.

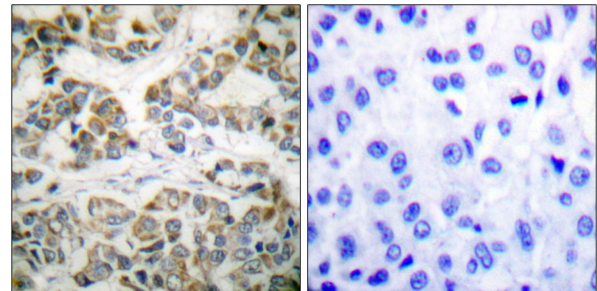
## Storage Instructions

Stable for 1 year at -20°C from date of shipment. For maximum recovery of product, centrifuge the original vial after thawing and prior to removing the cap. Aliquot to avoid repeated freezing and thawing. Aliquot will be stable at 4°C for 3 months.

## Images



Western blot analysis of extracts from 293 cells treated with EGF (200ng/ml, 30mins), using Shc (phospho-Tyr349) antibody.



Immunohistochemical analysis of paraffin-embedded human breast carcinoma tissue using Shc (phospho-Tyr349) antibody.