

Anti- Shc (Phospho-Tyr427) Polyclonal Antibody



<u>Catalog No.</u>	<u>Size</u>
A100011-01	50 µl
A100011-02	100 µl

Specificity	Anti- Shc (Phospho-Tyr427) (human Mouse Rat)
Source	Rabbit Polyclonal
Application	WB ELISA IHC
Form	Liquid, 1 mg/ml

Specificity and Sensitivity

Swiss-Prot No.: P29353

Other Names: SH2 domain protein C1, SHC, SHC-transforming protein 1, SHCA, Src homology 2 domain-containing-transforming protein C1

Specificity and Sensitivity

Shc (phospho-Tyr427) antibody detects endogenous levels of Shc only when phosphorylated at serine 24.

Source and Purification

The antiserum was produced against synthesized phosphopeptide derived from human Shc around the phosphorylation site of tyrosine 427 (P-S-Y^P-V-N).

The antibody was affinity-purified from rabbit antiserum by affinity-chromatography using epitope-specific immunogen.

Application Notes

Optimal working dilutions should be determined experimentally by the investigator. Suggested starting dilutions are as follows:

WB: 1:500~1000 IHC: 1:50~100

ELISA: 1:10000

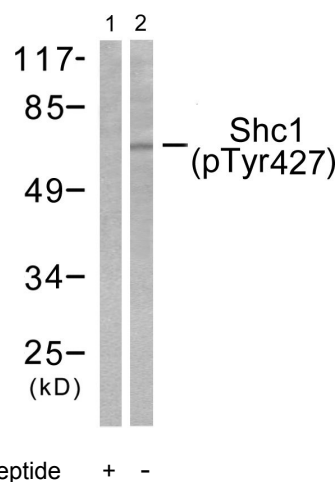
Storage Buffer

Rabbit IgG in phosphate buffered saline (without Mg²⁺ and Ca²⁺), pH 7.4, 150mM NaCl, 0.02% sodium azide and 50% glycerol.

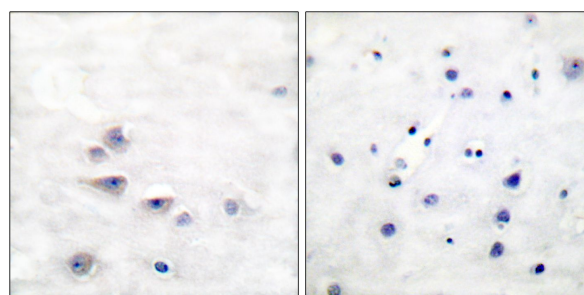
Storage Instructions

Stable for 1 year at -20°C from date of shipment. For maximum recovery of product, centrifuge the original vial after thawing and prior to removing the cap. Aliquot to avoid repeated freezing and thawing. Aliquot will be stable at 4°C for 3 months.

Images



Western blot analysis of extracts from HeLa cells treated with Calyculin A (50ng/ml, 15mins), using Shc (phospho-Tyr427) antibody.



P-peptide - +

Immunohistochemical analysis of paraffin-embedded human brain tissue using Shc (phospho-Tyr427) antibody.