

Anti- Akt (Phospho-Thr308) Polyclonal Antibody



<u>Catalog No.</u>	<u>Size</u>
A100019-01	50 µl
A100019-02	100 µl

Specificity	Anti- Akt (Phospho-Thr308) (Human)
Source	Rabbit Polyclonal
Application	WB ELISA IHC
Form	Liquid, 1 mg/ml

Background Information

Swiss-Prot No.: P31749/P31751/Q9Y243

Other Names: AKT; AKT1 kinase; C-AKT; kinase Akt1; PKB; PKB-alpha; Protein kinase B; RAC; RAC-alpha serine/threonine kinase; RAC-PK-alpha

Specificity and Sensitivity

Akt (Phospho-Thr308) Antibody detects endogenous levels of Akt only when phosphorylated at Thr 308.

Source and Purification

The antiserum was produced against synthesized phosphopeptide derived from human Akt

The antibody was affinity-purified from rabbit antiserum by affinity-chromatography using epitope-specific immunogen.

Application Notes

Optimal working dilutions should be determined experimentally by the investigator. Suggested starting dilutions are as follows:

WB: 1:500~1:3000 ELISA: 1:1000

IHC: 1:50~1:200

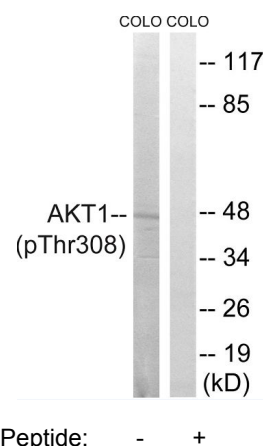
Storage Buffer

Rabbit IgG in phosphate buffered saline (without Mg²⁺ and Ca²⁺), pH 7.4, 150mM NaCl, 0.02% sodium azide and 50% glycerol.

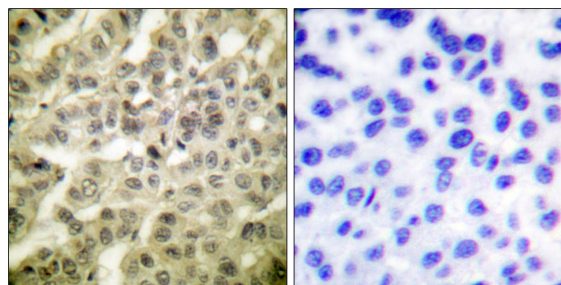
Storage Instructions

Stable for 1 year at -20°C from date of shipment. For maximum recovery of product, centrifuge the original vial after thawing and prior to removing the cap. Aliquot to avoid repeated freezing and thawing. Aliquot will be stable at 4°C for 3 months.

Images



Western blot analysis of extracts from COLO, using Akt (Phospho-Thr308) antibody.



Immunohistochemistry analysis of paraffin-embedded human breast carcinoma tissue using Akt (Phospho-Thr308) antibody.