

# Anti- STAT5B (Phospho-Ser731) Polyclonal Antibody



<u>Catalog No.</u>	<u>Size</u>
A100040-01	50 µl
A100040-02	100 µl

<b>Specificity</b>	Anti-STAT5B (Phospho-Ser731) (Human Mouse Rat)
<b>Source</b>	Rabbit Polyclonal
<b>Application</b>	WB ELISA IHC
<b>Form</b>	Liquid, 1 mg/ml

## Specificity and Sensitivity

**Swiss-Prot No.:** P51692

**Other Names:** Signal transducer and activator of transcription 5B

## Specificity and Sensitivity

STAT5B (phospho-Ser731) antibody detects endogenous levels of STAT5B only when phosphorylated at serine 731.

## Source and Purification

The antiserum was produced against synthesized phosphopeptide derived from human STAT5B around the phosphorylation site of serine 731 (A-P-S<sup>P</sup>-P-A).

The antibody was affinity-purified from rabbit antiserum by affinity-chromatography using epitope-specific immunogen.

## Application Notes

Optimal working dilutions should be determined experimentally by the investigator. Suggested starting dilutions are as follows:

WB: 1:500~1:3000                      IHC: 1:50~1:100

ELISA: 1:40000

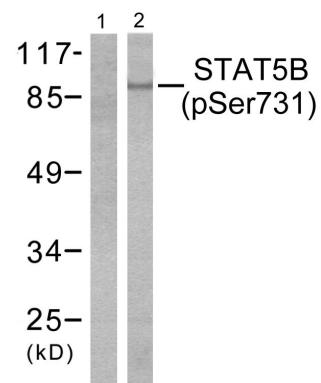
## Storage Buffer

Rabbit IgG in phosphate buffered saline (without Mg<sup>2+</sup> and Ca<sup>2+</sup>), pH 7.4, 150mM NaCl, 0.02% sodium azide and 50% glycerol.

## Storage Instructions

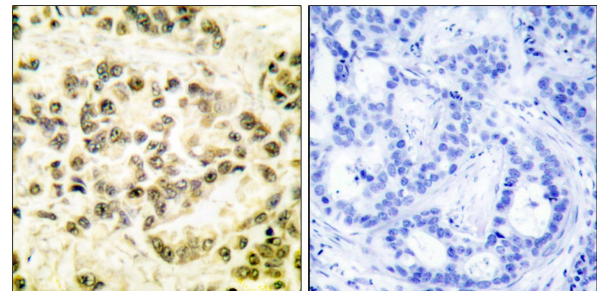
Stable for 1 year at -20°C from date of shipment. For maximum recovery of product, centrifuge the original vial after thawing and prior to removing the cap. Aliquot to avoid repeated freezing and thawing. Aliquot will be stable at 4°C for 3 months.

## Images



P-peptide + -

Western blot analysis of extracts from RAW264.7 cells, treated with EGF (200ng/ml, 30mins), using STAT5B (phospho-Ser731) antibody.



P-peptide - +

Immunohistochemical analysis of paraffin-embedded human breast carcinoma tissue using STAT5B (phospho-Ser731) antibody.