

Anti-4E-BP1 (Phospho-Thr69) Polyclonal Antibody



<u>Catalog No.</u>	<u>Size</u>
A100003-01	50 µl
A100003-02	100 µl

Specificity	Anti-4E-BP1 (Phospho-Thr69) (Human Mouse Rat)
Source	Rabbit Polyclonal
Application	WB ELISA IHC
Form	Liquid, 1 mg/ml

Specificity and Sensitivity

Swiss-Prot No.: Q13541

Other Names: 4EBP1; EIF4EBP1; Eukaryotic translation initiation factor 4E binding protein 1; Insulin-stimulated EIF-4E binding protein PHAS-I; P/OKCL.6; PHAS-1; PHAS-I

Specificity and Sensitivity

4E-BP1 (Phospho-Thr69) antibody detects endogenous levels of 4E-BP1 only when phosphorylated at threonine 69.

Source and Purification

The antiserum was produced against synthesized phosphopeptide derived from human 4E-BP1 around the phosphorylation site of threonine 69 (A-K-T^P-P-P). The antibody was affinity-purified from rabbit antiserum by affinity-chromatography using epitope-specific immunogen.

Application Notes

Optimal working dilutions should be determined experimentally by the investigator. Suggested starting dilutions are as follows:

WB: 1:500~1:1000 IHC: 1:50~1:100

ELISA: 1:5000

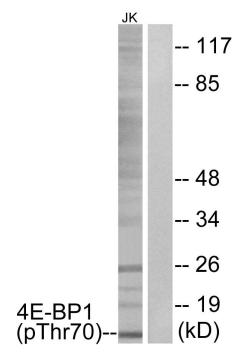
Storage Buffer

Rabbit IgG in phosphate buffered saline (without Mg²⁺ and Ca²⁺), pH 7.4, 150mM NaCl, 0.02% sodium azide and 50% glycerol.

Storage Instructions

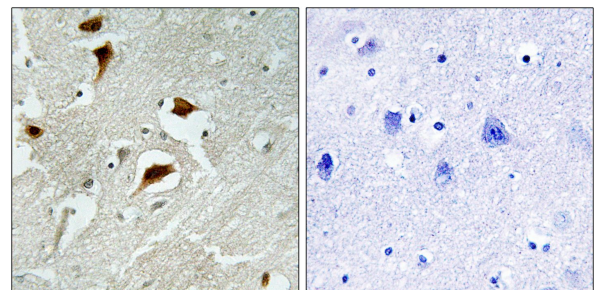
Stable for 1 year at -20°C from date of shipment. For maximum recovery of product, centrifuge the original vial after thawing and prior to removing the cap. Aliquot to avoid repeated freezing and thawing. Aliquot will be stable at 4°C for 3 months.

Images



P-peptide - +

Western blot analysis of extracts from Jurkat cells, treated with EGF (200ng/ml, 30mins), using 4E-BP1 (Phospho-Thr69) antibody.



P-peptide - +

Immunohistochemistry analysis of paraffin-embedded human brain tissue using 4E-BP1 (Phospho-Thr69) antibody.