

Anti- Chk2 (Phospho-Thr387) Polyclonal Antibody



| <u>Catalog No.</u> | <u>Size</u> |
|--------------------|-------------|
| A100048-01 | 50 µl |
| A100048-02 | 100 µl |

| | |
|--------------------|--|
| Specificity | Anti-Chk2 (Phospho-Thr387) (Human Mouse Rat) |
| Source | Rabbit Polyclonal |
| Application | WB ELISA IHC |
| Form | Liquid, 1 mg/ml |

Specificity and Sensitivity

Swiss-Prot No.: O96017

Other Names: CHEK2, CHK2, Cds1, Chk2, RAD53, kinase Chk2

Specificity and Sensitivity

Chk2 (Phospho-Thr387) antibody detects endogenous levels of Chk2 only when phosphorylated at threonine 387.

Source and Purification

The antiserum was produced against synthesized phosphopeptide derived from human Chk2 around the phosphorylation site of threonine 387 (C-G-T^P-P-T).

The antibody was affinity-purified from rabbit antiserum by affinity-chromatography using epitope-specific immunogen.

Application Notes

Optimal working dilutions should be determined experimentally by the investigator. Suggested starting dilutions are as follows:

WB: 1:500~1:3000 IHC: 1:50~100

ELISA: 1:5000

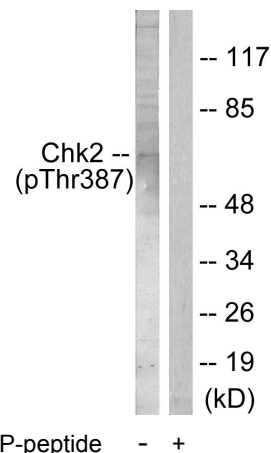
Storage Buffer

Rabbit IgG in phosphate buffered saline (without Mg²⁺ and Ca²⁺), pH 7.4, 150mM NaCl, 0.02% sodium azide and 50% glycerol.

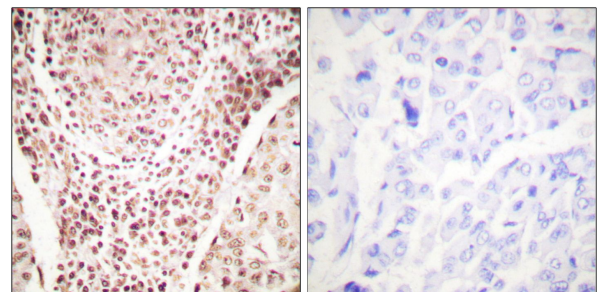
Storage Instructions

Stable for 1 year at -20°C from date of shipment. For maximum recovery of product, centrifuge the original vial after thawing and prior to removing the cap. Aliquot to avoid repeated freezing and thawing. Aliquot will be stable at 4°C for 3 months.

Images



Western blot analysis of extracts from Jurkat cells, using Chk2 (Phospho-Thr387) antibody.



P-peptide - +
Immunohistochemical analysis of paraffin-embedded human breast carcinoma tissue using Chk2 (Phospho-Thr387) antibody.