

Anti- Cyclin D3 (Phospho-Thr283) Polyclonal Antibody



<u>Catalog No.</u>	<u>Size</u>
A100049-01	50 µl
A100049-02	100 µl

Specificity	Anti-Cyclin D3 (Phospho-Thr283) (Human Mouse Rat)
Source	Rabbit Polyclonal
Application	WB ELISA IHC
Form	Liquid, 1 mg/ml

Specificity and Sensitivity

Swiss-Prot No.: P30281

Other Names: CCND3, CGD3, Cyl-3, G1/S-specific cyclin D3

Specificity and Sensitivity

Cyclin D3 (Phospho-Thr283) antibody detects endogenous levels of Cyclin D3 only when phosphorylated at threonine 283.

Source and Purification

The antiserum was produced against synthesized phosphopeptide derived from human Cyclin D3 around the phosphorylation site of threonine 283 (T-S-T^P-P-T).

The antibody was affinity-purified from rabbit antiserum by affinity-chromatography using epitope-specific immunogen.

Application Notes

Optimal working dilutions should be determined experimentally by the investigator. Suggested starting dilutions are as follows:

WB: 1:500~3000 IHC: 1:50~1:100

ELISA: 1:1000

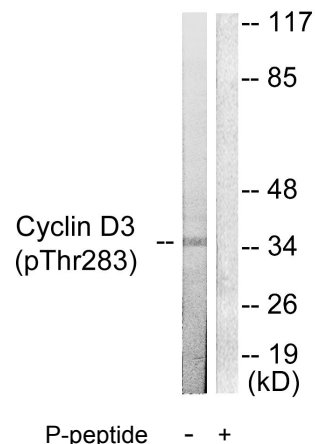
Storage Buffer

Rabbit IgG in phosphate buffered saline (without Mg²⁺ and Ca²⁺), pH 7.4, 150mM NaCl, 0.02% sodium azide and 50% glycerol.

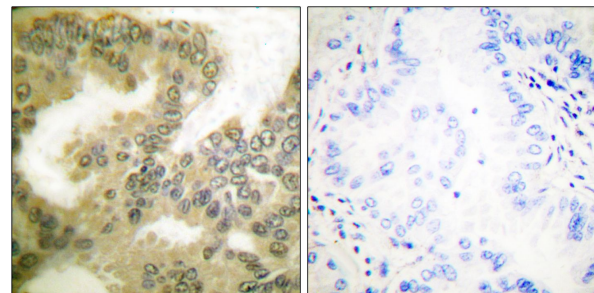
Storage Instructions

Stable for 1 year at -20°C from date of shipment. For maximum recovery of product, centrifuge the original vial after thawing and prior to removing the cap. Aliquot to avoid repeated freezing and thawing. Aliquot will be stable at 4°C for 3 months.

Images



Western blot analysis of extracts from K562 cells treated with UV (5mins), using Cyclin D3 (Phospho-Thr283) antibody.



Immunohistochemical analysis of paraffin-embedded human lung carcinoma tissue using Cyclin D3 (Phospho-Thr283) antibody.