

Anti-Calnexin (Phospho-Ser583) Polyclonal Antibody



<u>Catalog No.</u>	<u>Size</u>
A100062-01	50 µl
A100062-02	100 µl

Specificity	Anti-Calnexin (Phospho-Ser583) (Human Mouse Rat)
Source	Rabbit Polyclonal
Application	WB ELISA IHC IF
Form	Liquid, 1 mg/ml

Specificity and Sensitivity

Swiss-Prot No.: P27824

Other Names: CALX, CANX, IP90, Major histocompatibility complex class I antigen-binding protein p88, p90

Specificity and Sensitivity

Calnexin (Phospho-Ser583) antibody detects endogenous levels of Calnexin only when phosphorylated at serine 583.

Source and Purification

The antiserum was produced against synthesized phosphopeptide derived from human Calnexin around the phosphorylation site of serine 583 (N-R-S^P-P-R).

The antibody was affinity-purified from rabbit antiserum by affinity-chromatography using epitope-specific immunogen.

Application Notes

Optimal working dilutions should be determined experimentally by the investigator. Suggested starting dilutions are as follows:

WB: 1:500~1:3000 IHC: 1:50~1:100

IF: 1:100~1:500 ELISA: 1:5000

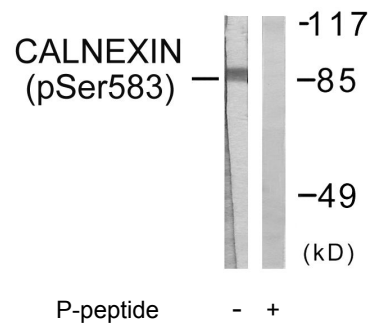
Storage Buffer

Rabbit IgG in phosphate buffered saline (without Mg²⁺ and Ca²⁺), pH 7.4, 150mM NaCl, 0.02% sodium azide and 50% glycerol.

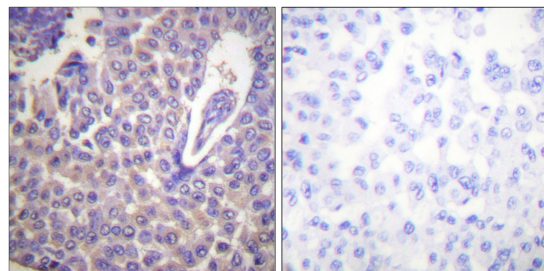
Storage Instructions

Stable for 1 year at -20°C from date of shipment. For maximum recovery of product, centrifuge the original vial after thawing and prior to removing the cap. Aliquot to avoid repeated freezing and thawing. Aliquot will be stable at 4°C for 3 months.

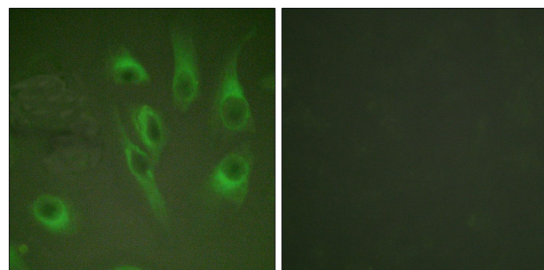
Images



Western blot analysis of extracts from HeLa cells, treated with EGF (200ng/ml, 30mins), using Calnexin (Phospho-Ser583) antibody.



P-peptide - +
Immunohistochemistry analysis of paraffin-embedded human breast carcinoma tissue, using Calnexin (Phospho-Ser583) antibody.



P-peptide - +
Immunofluorescence analysis of HeLa cells, using Calnexin (Phospho-Ser583) antibody.