

Anti-FOXO1/3/4-pan(Phospho-Thr24/32)Polyclonal Antibody



<u>Catalog No.</u>	<u>Size</u>
A100068-01	50 µl
A100068-02	100 µl

Specificity	Anti-FOXO1/3/4-pan (Phospho-Thr24/32) (Human Mouse Rat)
Source	Rabbit Polyclonal
Application	WB ELISA IHC
Form	Liquid, 1 mg/ml

Specificity and Sensitivity

Swiss-Prot No.: Q12778/O43524/P98177

Other Names: FKHR, FOXO1, Forkhead box protein O1A, Forkhead in rhabdomyosarcoma, AF6q21 protein, FKHR2, FKHL1, FOXO3, Forkhead box O3, Forkhead box protein O3A, Forkhead in rhabdomyosarcoma-like 1, AFX, AFX1, Afxh, Forkhead box protein O4, MLLT7, Putative forkhead domain AFX1, putative fork head domain AFX1

Specificity and Sensitivity

FOXO1/3/4-pan (Phospho-Thr24/32) antibody detects endogenous levels of FOXO1/3/4-pan only when phosphorylated at threonine 24/32.

Source and Purification

The antiserum was produced against synthesized phosphopeptide derived from human FOXO1/3/4-pan around the phosphorylation site of threonine 24/32 (S-C-T^P-W-P). The antibody was affinity-purified from rabbit antiserum by affinity-chromatography using epitope-specific immunogen.

Application Notes

Optimal working dilutions should be determined experimentally by the investigator. Suggested starting dilutions are as follows:

WB: 1:500~1:3000 IHC: 1:50~1:100

ELISA: 1:5000

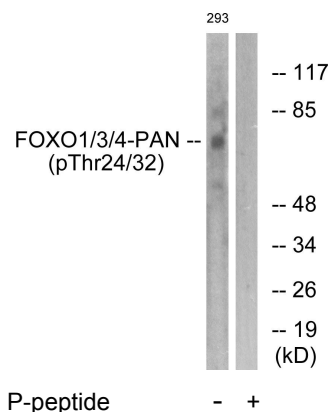
Storage Buffer

Rabbit IgG in phosphate buffered saline (without Mg²⁺ and Ca²⁺), pH 7.4, 150mM NaCl, 0.02% sodium azide and 50% glycerol.

Storage Instructions

Stable for 1 year at -20°C from date of shipment. For maximum recovery of product, centrifuge the original vial after thawing and prior to removing the cap. Aliquot to avoid repeated freezing and thawing. Aliquot will be stable at 4°C for 3 months.

Images



Western blot analysis of extracts from 293 cells, treated with Serum (20%, 15mins), using FOXO1/3/4-pan (Phospho-Thr24/32) antibody.