

Anti-PECAM-1 (Phospho-Tyr713) Polyclonal Antibody



<u>Catalog No.</u>	<u>Size</u>
A100075-01	50 µl
A100075-02	100 µl

Specificity	Anti-PECAM-1 (Phospho-Tyr713) (human mouse)
Source	Rabbit Polyclonal
Application	WB ELISA IF
Form	Liquid, 1 mg/ml

Product

Swiss-Prot No.: P16284

Other Names: CD31, CD31 antigen, EndoCAM, PEC1, PECA1, PECAM, PECAM1, Platelet endothelial cell adhesion molecule precursor

Specificity and Sensitivity

PECAM-1 (Phospho-Tyr713) antibody detects endogenous levels of PECAM-1 only when phosphorylated at tyrosine 713.

Source and Purification

The antiserum was produced against synthesized phosphopeptide derived from human PECAM-1 around the phosphorylation site of tyrosine 713 (T-V-Y^P-S-E).

The antibody was affinity-purified from rabbit antiserum by affinity-chromatography using epitope-specific immunogen.

Application Notes

Optimal working dilutions should be determined experimentally by the investigator. Suggested starting dilutions are as follows:

WB: 1:500~1:3000 IF: 1:100~1:500

ELISA: 1:20000

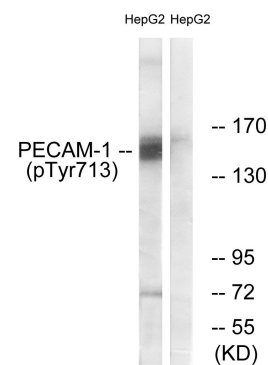
Storage Buffer

Rabbit IgG in phosphate buffered saline (without Mg²⁺ and Ca²⁺), pH 7.4, 150mM NaCl, 0.02% sodium azide and 50% glycerol.

Storage Instructions

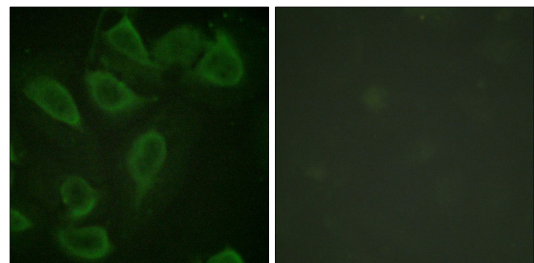
Stable for 1 year at -20°C from date of shipment. For maximum recovery of product, centrifuge the original vial after thawing and prior to removing the cap. Aliquot to avoid repeated freezing and thawing. Aliquot will be stable at 4°C for 3 months.

Images



P-peptide - +

Western blot analysis of extracts from HepG2 cells, using PECAM-1 (Phospho-Tyr713) antibody.



P-peptide - +

Immunofluorescence analysis of HeLa cells, using PECAM-1 (Phospho-Tyr713) antibody