

# Anti- Raf1 (Phospho-Tyr341) Polyclonal Antibody



<u>Catalog No.</u>	<u>Size</u>
A100077-01	50 µl
A100077-02	100 µl

<b>Specificity</b>	Anti- Raf1 (Phospho-Tyr341) (human mouse rat)
<b>Source</b>	Rabbit Polyclonal
<b>Application</b>	WB ELISA IHC
<b>Form</b>	Liquid, 1 mg/ml

## Product

**Swiss-Prot No.:** P04049

**Other Names:** C-RAF, C-Raf, CRAF, EC 2.7.11.1, Protein kinase raf 1, RAF proto-oncogene serine/threonine-protein kinase, RAF-1, RAF1, Raf proto-oncogene serine/threonine-protein kinase, Raf-1, Similar to murine leukemia viral (V-raf-1) oncogene homolog 1, kinase Raf1.

## Specificity and Sensitivity

Raf1 (Phospho-Tyr341) antibody detects endogenous levels of Raf1 only when phosphorylated at tyrosine 341.

## Source and Purification

The antiserum was produced against synthesized phosphopeptide derived from human Raf1 around the phosphorylation site of tyrosine 341 (S-Y<sup>P</sup>-W-E).

The antibody was affinity-purified from rabbit antiserum by affinity-chromatography using epitope-specific immunogen.

## Application Notes

Optimal working dilutions should be determined experimentally by the investigator. Suggested starting dilutions are as follows:

WB: 1:500~1:3000    IHC: 1:50~1:100

ELISA: 1:1000

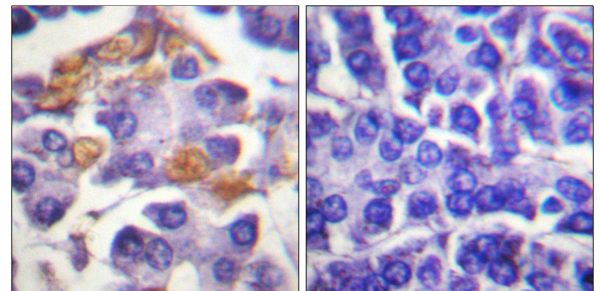
## Storage Buffer

Rabbit IgG in phosphate buffered saline (without Mg<sup>2+</sup> and Ca<sup>2+</sup>), pH 7.4, 150mM NaCl, 0.02% sodium azide and 50% glycerol.

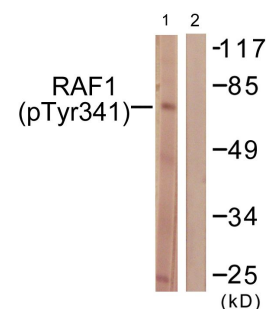
## Storage Instructions

Stable for 1 year at -20°C from date of shipment. For maximum recovery of product, centrifuge the original vial after thawing and prior to removing the cap. Aliquot to avoid repeated freezing and thawing. Aliquot will be stable at 4°C for 3 months.

## Images



P-peptide                    -                    +  
Immunohistochemistry analysis of paraffin-embedded human pancreas tissue using Raf1 (Phospho-Tyr341) antibody.



Paclitaxel                    +                    +  
P-peptide                    -                    +

Western blot analysis of extracts from Jurkat cells, treated with Paclitaxel (1uM, 24hours), using Raf1 (Phospho-Tyr341) antibody.