

Anti- ALK (Phospho-Tyr1604) Polyclonal Antibody



<u>Catalog No.</u>	<u>Size</u>
A100083-01	50 µl
A100083-02	100 µl

Specificity	Anti- ALK (Phospho-Tyr1604) (human)
Source	Rabbit Polyclonal
Application	WB ELISA IHC IF
Form	Liquid, 1 mg/ml

Product

Swiss-Prot No.: Q9UM73

Other Names: ALK tyrosine kinase receptor precursor, Anaplastic lymphoma kinase, CD246, EC 2.7.10.1, kinase ALK

Specificity and Sensitivity

A ALK (Phospho-Tyr1604) antibody detects endogenous levels of ALK only when phosphorylated at tyrosine 1604.

Source and Purification

The antiserum was produced against synthesized phosphopeptide derived from human ALK around the phosphorylation site of tyrosine 1604 (G-H-Y^P-E-D). The antibody was affinity-purified from rabbit antiserum by affinity-chromatography using epitope-specific immunogen.

Application Notes

Optimal working dilutions should be determined experimentally by the investigator. Suggested starting dilutions are as follows:

1:500~1:3000 IHC: 1:50~1:100

IF: 1:100~1:500 ELISA: 1:20000

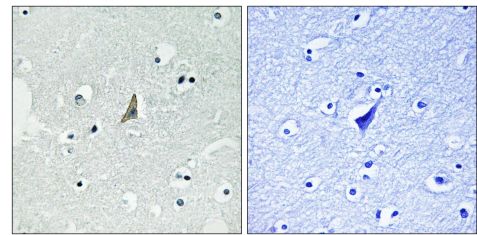
Storage Buffer

Rabbit IgG in phosphate buffered saline (without Mg²⁺ and Ca²⁺), pH 7.4, 150mM NaCl, 0.02% sodium azide and 50% glycerol.

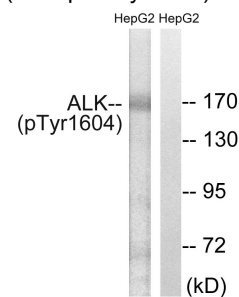
Storage Instructions

Stable for 1 year at -20°C from date of shipment. For maximum recovery of product, centrifuge the original vial after thawing and prior to removing the cap. Aliquot to avoid repeated freezing and thawing. Aliquot will be stable at 4°C for 3 months.

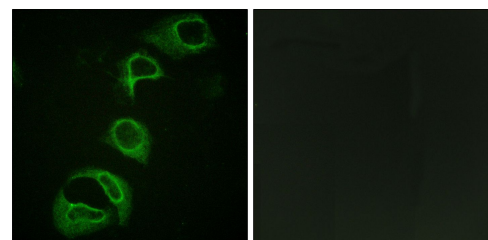
Images



P-peptide - +
Immunohistochemistry analysis of paraffin-embedded human brain tissue, using ALK (Phospho-Tyr1604) antibody.



P-peptide - +
Western blot analysis of extracts from HepG2 cells, using ALK (Phospho-Tyr1604) antibody.



P-peptide - +
Immunofluorescence analysis of HeLa cells, using ALK (Phospho-Tyr1604) antibody..