

Anti-CyclinB1(Phospho-Ser147)Polyclonal Antibody



<u>Catalog No.</u>	<u>Size</u>
A100086-01	50 µl
A100086-02	100 µl

Specificity	Anti- Cyclin B1 (Phospho-Ser147) (human mouse)
Source	Rabbit Polyclonal
Application	WB ELISA IHC
Form	Liquid, 1 mg/ml

Product

Swiss-Prot No.: P14635

Other Names: CCN-2, CCNB, CCNB1, CCNB1-RS1, CYCB, CYCB1, G2/mitotic-specific cyclin B1

Specificity and Sensitivity

Cyclin B1 (Phospho-Ser147) antibody detects endogenous levels of Cyclin B1 only when phosphorylated at serine 147.

Source and Purification

The antiserum was produced against synthesized phosphopeptide derived from human Cyclin B1 around the phosphorylation site of serine 147 (A-F-S^P-D-V).

The antibody was affinity-purified from rabbit antiserum by affinity-chromatography using epitope-specific immunogen.

Application Notes

Optimal working dilutions should be determined experimentally by the investigator. Suggested starting dilutions are as follows:

WB: 1:500~1:3000 IHC: 1:50~1:100 ELISA: 1:10000

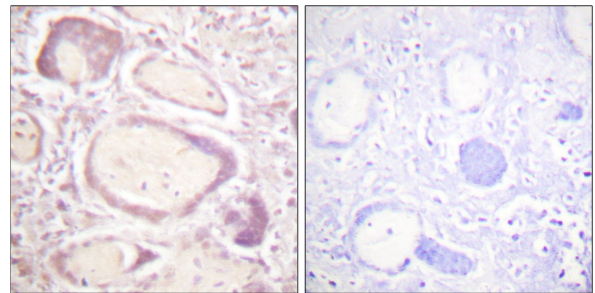
Storage Buffer

Rabbit IgG in phosphate buffered saline (without Mg²⁺ and Ca²⁺), pH 7.4, 150mM NaCl, 0.02% sodium azide and 50% glycerol.

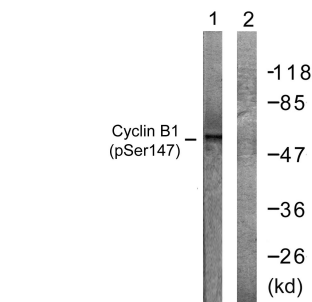
Storage Instructions

Stable for 1 year at -20°C from date of shipment. For maximum recovery of product, centrifuge the original vial after thawing and prior to removing the cap. Aliquot to avoid repeated freezing and thawing. Aliquot will be stable at 4°C for 3 months.

Images



Immunohistochemistry analysis of paraffin-embedded human placenta tissue using Cyclin B1 (Phospho-Ser147) antibody.



Western blot analysis of extracts from Jurkat cells, treated with UV (15mins), using Cyclin B1 (Phospho-Ser147) antibody.