

Anti-eIF4B (Phospho-Ser422) Polyclonal Antibody



Catalog No.	Size
A100087-01	50 µl
A100087-02	100 µl

Specificity	Anti-eIF4B (Phospho-Ser422) (human mouse rat)
Source	Rabbit Polyclonal
Application	WB ELISA IHC IF
Form	Liquid, 1 mg/ml

Product

Swiss-Prot No.: P23588

Other Names: Eukaryotic translation initiation factor 4B, IF4B, eIF-4B

Specificity and Sensitivity

eIF4B (Phospho-Ser422) antibody detects endogenous levels of eIF4B only when phosphorylated at serine 422.

Source and Purification

The antiserum was produced against synthesized phosphopeptide derived from human eIF4B around the phosphorylation site of serine 422 (T-G-S^P-E-S).

The antibody was affinity-purified from rabbit antiserum by affinity-chromatography using epitope-specific immunogen.

Application Notes

Optimal working dilutions should be determined experimentally by the investigator. Suggested starting dilutions are as follows:

WB: 1:500~1:3000 IHC: 1:50~1:100

IF: 1:100~1:500 ELISA: 1:40000

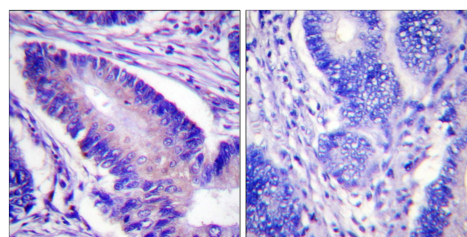
Storage Buffer

Rabbit IgG in phosphate buffered saline (without Mg²⁺ and Ca²⁺), pH 7.4, 150mM NaCl, 0.02% sodium azide and 50% glycerol.

Storage Instructions

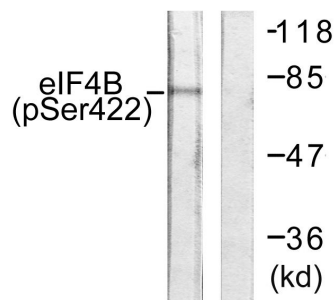
Stable for 1 year at -20°C from date of shipment. For maximum recovery of product, centrifuge the original vial after thawing and prior to removing the cap. Aliquot to avoid repeated freezing and thawing. Aliquot will be stable at 4°C for 3 months.

Images



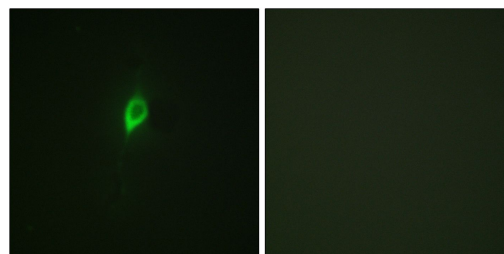
P-peptide - +

Immunohistochemistry analysis of paraffin-embedded human colon carcinoma tissue using eIF4B (Phospho-Ser422) antibody.



P-peptide - +

Western blot analysis of extracts from NIH/3T3 cells, using eIF4B (Phospho-Ser422) antibody.



P-peptide - +

Immunofluorescence analysis of NIH/3T3 cells, using eIF4B (Phospho-Ser422) antibody.