

# Anti- BAD (Phospho-Ser91/128) Polyclonal Antibody



<u>Catalog No.</u>	<u>Size</u>
A100106-01	50 µl
A100106-02	100 µl

<b>Specificity</b>	Anti- BAD (Phospho-Ser91/128) (human mouse rat )
<b>Source</b>	Rabbit Polyclonal
<b>Application</b>	WB ELISA IHC
<b>Form</b>	Liquid, 1 mg/ml

## Product

**Swiss-Prot No.:** Q92934

**Other Names:** BAD, BBC6, BCL2L8, Bcl- XL/Bcl-2 associated death promoter, Bcl-2 binding component 6, Bcl-2-like 8 protein, Bcl-xL/Bcl-2 associated death promoter, Bcl2-antagonist of cell death.

## Specificity and Sensitivity

BAD (Phospho-Ser91/128) antibody detects endogenous levels of BAD only when phosphorylated at serine 91/ serine 128.

## Source and Purification

The antiserum was produced against synthesized phosphopeptide derived from human BAD around the phosphorylation site of serine 91/ serine 128 (E-L-S<sup>P</sup>-P-F). The antibody was affinity-purified from rabbit antiserum by affinity-chromatography using epitope-specific immunogen.

## Application Notes

Optimal working dilutions should be determined experimentally by the investigator. Suggested starting dilutions are as follows:

WB: 1:500~1:3000    IHC: 1:50~1:100    ELISA: 1:10000

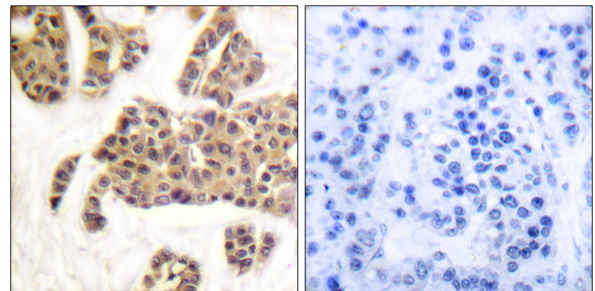
## Storage Buffer

Rabbit IgG in phosphate buffered saline (without Mg<sup>2+</sup> and Ca<sup>2+</sup>), pH 7.4, 150mM NaCl, 0.02% sodium azide and 50% glycerol.

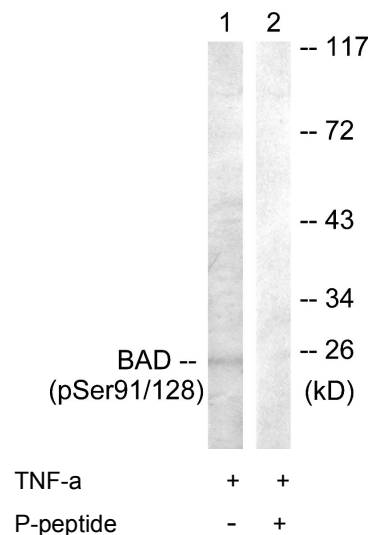
## Storage Instructions

Stable for 1 year at -20°C from date of shipment. For maximum recovery of product, centrifuge the original vial after thawing and prior to removing the cap. Aliquot to avoid repeated freezing and thawing. Aliquot will be stable at 4°C for 3 months.

## Images



P-peptide                    -                    +  
Immunohistochemistry analysis of paraffin-embedded human breast carcinoma tissue, using BAD (Phospho-Ser91/128) antibody.



Western blot analysis of extracts from COS7 cells, treated with TNF-a (20ng/ml, 30mins), using BAD (Phospho-Ser91/128) antibody.