

Anti- 53BP1 (Phospho-Ser25) Polyclonal Antibody



<u>Catalog No.</u>	<u>Size</u>
A100112-01	50 µl
A100112-02	100 µl

Specificity	Anti- 53BP1 (Phospho-Ser25) (human mouse rat)
Source	Rabbit Polyclonal
Application	ELISA IHC IF
Form	Liquid, 1 mg/ml

Product

Swiss-Prot No.: Q12888

Other Names: P531, TP53B, TP53BP1, TRP53BP1, Tumor suppressor p53-binding protein 1, p53-binding protein 1

Specificity and Sensitivity

53BP1 (Phospho-Ser25) antibody detects endogenous levels of 53BP1 only when phosphorylated at serine 25.

Source and Purification

The antiserum was produced against synthesized phosphopeptide derived from human 53BP1 around the phosphorylation site of serine 25 (E-D-S^P-Q-P).

The antibody was affinity-purified from rabbit antiserum by affinity-chromatography using epitope-specific immunogen.

Application Notes

Optimal working dilutions should be determined experimentally by the investigator. Suggested starting dilutions are as follows:

IHC: 1:50~1:100 IF: 1:100~1:500 ELISA: 1:1000

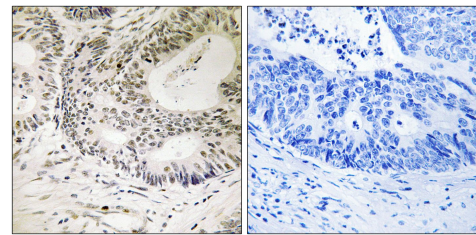
Storage Buffer

Rabbit IgG in phosphate buffered saline (without Mg²⁺ and Ca²⁺), pH 7.4, 150mM NaCl, 0.02% sodium azide and 50% glycerol.

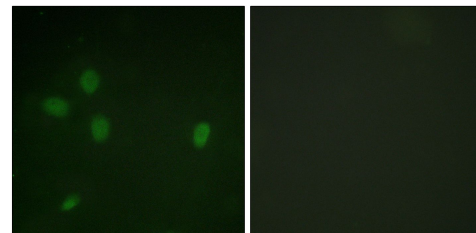
Storage Instructions

Stable for 1 year at -20°C from date of shipment. For maximum recovery of product, centrifuge the original vial after thawing and prior to removing the cap. Aliquot to avoid repeated freezing and thawing. Aliquot will be stable at 4°C for 3 months.

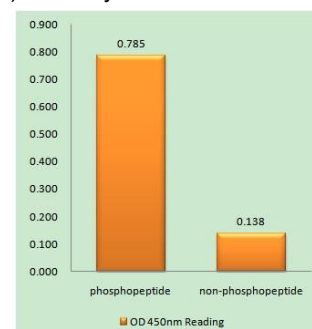
Images



P-peptide - +
Immunohistochemistry analysis of paraffin-embedded human colon carcinoma tissue using 53BP1 (Phospho-Ser25) antibody.



P-peptide - +
Immunofluorescence analysis of NIH/3T3 cells, using 53BP1 (Phospho-Ser25) antibody.



53BP1 (Phospho-Ser25) antibody reacts with epitope-specific phosphopeptide and corresponding non-phosphopeptide. The absorbance readings at 450 nm are shown in the ELISA figure.