

## Anti- EPHA2/3/4 (Phospho-Tyr588/596) Polyclonal Antibody



Catalog No.	Size
A100113-01	50 µl
A100113-02	100 µl

<b>Specificity</b>	Anti- EPHA2/3/4 (Phospho-Tyr588/596) (human mouse )
<b>Source</b>	Rabbit Polyclonal
<b>Application</b>	WB ELISA IF
<b>Form</b>	Liquid, 1 mg/ml

### Product

**Swiss-Prot No.:** P29317/P29320/P54764

**Other Names:** EC 2.7.10.1, ECK, Ephrin type-A receptor 2 precursor, Epithelial cell kinase, MPK-5, SEK-2, SEK2, Tyrosine-protein kinase receptor ECK, kinase EphA2

### Specificity and Sensitivity

EPHA2/3/4 (Phospho-Tyr588/596) antibody detects endogenous levels of EPHA2/3/4 only when phosphorylated at tyrosine 588/596.

### Source and Purification

The antiserum was produced against synthesized phosphopeptide derived from human EPHA2/3/4 around the phosphorylation site of tyrosine 588/596 (T-Y<sup>P</sup>-V-D-P).

The antibody was affinity-purified from rabbit antiserum by affinity-chromatography using epitope-specific immunogen.

### Application Notes

Optimal working dilutions should be determined experimentally by the investigator. Suggested starting dilutions are as follows:

WB: 1:500~1:3000 IF: 1:100~1:500 ELISA: 1:20000

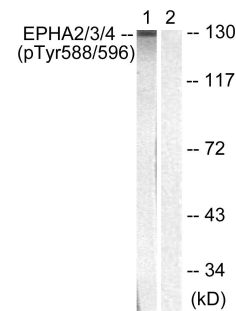
### Storage Buffer

Rabbit IgG in phosphate buffered saline (without Mg<sup>2+</sup> and Ca<sup>2+</sup>), pH 7.4, 150mM NaCl, 0.02% sodium azide and 50% glycerol.

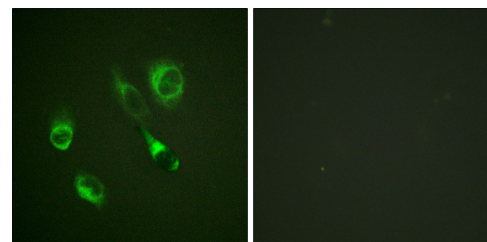
### Storage Instructions

Stable for 1 year at -20°C from date of shipment. For maximum recovery of product, centrifuge the original vial after thawing and prior to removing the cap. Aliquot to avoid repeated freezing and thawing. Aliquot will be stable at 4°C for 3 months.

### Images



Western blot analysis of extracts from HepG2 cells, using EPHA2/3/4 (Phospho-Tyr588/596) antibody.



Immunofluorescence analysis of HeLa cells, using EPHA2/3/4 (Phospho-Tyr588/596) antibody.