

# Anti- RFA2 (Phospho-Thr21) Polyclonal Antibody



<u>Catalog No.</u>	<u>Size</u>
A100118-01	50 µl
A100118-02	100 µl

<b>Specificity</b>	Anti- RFA2 (Phospho-Thr21) (human mouse )
<b>Source</b>	Rabbit Polyclonal
<b>Application</b>	WB ELISA IHC
<b>Form</b>	Liquid, 1 mg/ml

## Product

**Swiss-Prot No.:** P15927

**Other Names:** REPA2, RF-A, RP-A, RPA2, RPA32, replication factor-A protein 2, replication protein A 32 kDa subunit, replication protein A2

## Specificity and Sensitivity

RFA2 (Phospho-Thr21) antibody detects endogenous levels of RFA2 only when phosphorylated at threonine 21.

## Source and Purification

The antiserum was produced against synthesized phosphopeptide derived from human RFA2 around the phosphorylation site of threonine 21 (G-Y-T<sup>P</sup>-Q-S). The antibody was affinity-purified from rabbit antiserum by affinity-chromatography using epitope-specific immunogen.

## Application Notes

Optimal working dilutions should be determined experimentally by the investigator. Suggested starting dilutions are as follows:

WB: 1:500~1:3000    IHC: 1:50~1:100    ELISA: 1:1000

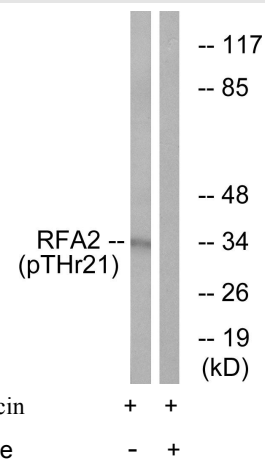
## Storage Buffer

Rabbit IgG in phosphate buffered saline (without Mg<sup>2+</sup> and Ca<sup>2+</sup>), pH 7.4, 150mM NaCl, 0.02% sodium azide and 50% glycerol.

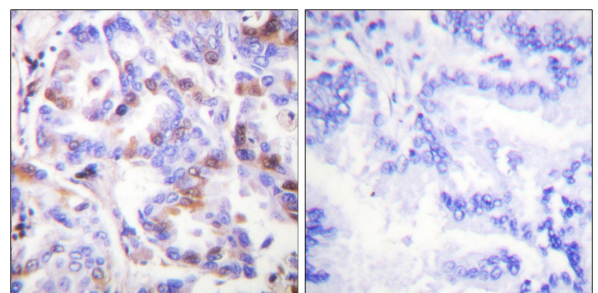
## Storage Instructions

Stable for 1 year at -20°C from date of shipment. For maximum recovery of product, centrifuge the original vial after thawing and prior to removing the cap. Aliquot to avoid repeated freezing and thawing. Aliquot will be stable at 4°C for 3 months.

## Images



Western blot analysis of extracts from HeLa cells, treated with Adriamycin (0.5ug/ml, 24hours), using RFA2 (Phospho-Thr21) antibody.



P-peptide                    -                    +  
Immunohistochemistry analysis of paraffin-embedded human lung carcinoma tissue, using RFA2 (Phospho-Thr21) antibody.