

Anti- Smad3 (Phospho-Ser204) Polyclonal Antibody



<u>Catalog No.</u>	<u>Size</u>
A100120-01	50 µl
A100120-02	100 µl

Specificity	Anti- Smad3 (Phospho-Ser204) (human mouse rat)
Source	Rabbit Polyclonal
Application	WB ELISA
Form	Liquid, 1 mg/ml

Product

Swiss-Prot No.: P84022

Other Names: JV15-2, MAD-3, MADH3, Mad3, Mothers against DPP homolog 3, Mothers against decapentaplegic homolog 3, SMAD 3, Smad 3

Specificity and Sensitivity

Smad3 (Phospho-Ser204) antibody detects endogenous levels of Smad3 only when phosphorylated at serine 204.

Source and Purification

The antiserum was produced against synthesized phosphopeptide derived from human Smad3 around the phosphorylation site of serine 204 (A-G-S^P-P-N).

The antibody was affinity-purified from rabbit antiserum by affinity-chromatography using epitope-specific immunogen.

Application Notes

Optimal working dilutions should be determined experimentally by the investigator. Suggested starting dilutions are as follows:

WB: 1:500~1:3000 ELISA: 1:20000

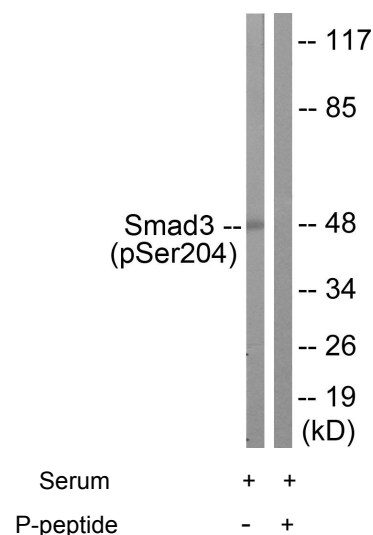
Storage Buffer

Rabbit IgG in phosphate buffered saline (without Mg²⁺ and Ca²⁺), pH 7.4, 150mM NaCl, 0.02% sodium azide and 50% glycerol.

Storage Instructions

Stable for 1 year at -20°C from date of shipment. For maximum recovery of product, centrifuge the original vial after thawing and prior to removing the cap. Aliquot to avoid repeated freezing and thawing. Aliquot will be stable at 4°C for 3 months.

Images



Western blot analysis of extracts from NIH/3T3 cells, treated with Serum (20%, 15mins), using Smad3 (Phospho-Ser204) antibody.