

## Anti- IL-2R $\beta$ /CD122 (Phospho-Tyr364) Polyclonal Antibody



<u>Catalog No.</u>	<u>Size</u>
A100126-01	50 $\mu$ l
A100126-02	100 $\mu$ l

<b>Specificity</b>	Anti- IL-2R $\beta$ /CD122 (Phospho-Tyr364) (human mouse )
<b>Source</b>	Rabbit Polyclonal
<b>Application</b>	WB ELISA
<b>Form</b>	Liquid, 1 mg/ml

### Product

**Swiss-Prot No.:** P14784

**Other Names:** CD122 antigen, High affinity IL-2 receptor beta subunit, IL-2 receptor, IL-2R beta, Interleukin-2 receptor beta chain precursor, P70-75

### Specificity and Sensitivity

IL-2R $\beta$ /CD122 (Phospho-Tyr364) antibody detects endogenous levels of IL-2R $\beta$ /CD122 only when phosphorylated at tyrosine 364.

### Source and Purification

The antiserum was produced against synthesized phosphopeptide derived from human IL-2R $\beta$ /CD122 around the phosphorylation site of tyrosine 364 (Q-G-Y<sup>P</sup>-F-F).

The antibody was affinity-purified from rabbit antiserum by affinity-chromatography using epitope-specific immunogen.

### Application Notes

Optimal working dilutions should be determined experimentally by the investigator. Suggested starting dilutions are as follows:

WB: 1:500~1:3000    ELISA: 1:10000

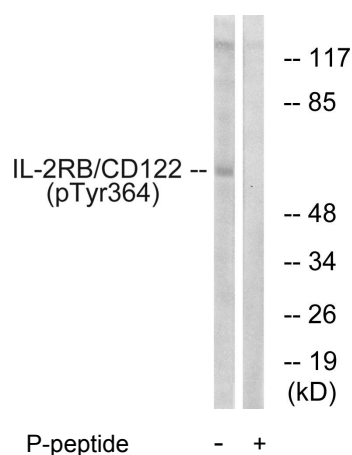
### Storage Buffer

Rabbit IgG in phosphate buffered saline (without Mg<sup>2+</sup> and Ca<sup>2+</sup>), pH 7.4, 150mM NaCl, 0.02% sodium azide and 50% glycerol.

### Storage Instructions

Stable for 1 year at -20°C from date of shipment. For maximum recovery of product, centrifuge the original vial after thawing and prior to removing the cap. Aliquot to avoid repeated freezing and thawing. Aliquot will be stable at 4°C for 3 months.

### Images



Western blot analysis of extracts from COS7 cells, using IL-2R $\beta$ /CD122 (Phospho-Tyr364) antibody.