

## Anti- PPP1R2 (Phospho-Ser120+Ser121) Polyclonal Antibody



Catalog No.	Size
A100131-01	50 µl
A100131-02	100 µl

<b>Specificity</b>	Anti- PPP1R2 (Phospho-Ser120+Ser121) (human mouse rat)
<b>Source</b>	Rabbit Polyclonal
<b>Application</b>	ELISA IHC
<b>Form</b>	Liquid, 1 mg/ml

### Product

**Swiss-Prot No.:** P41236

**Other Names:** I-2, IPP-2, IPP2, Protein phosphatase inhibitor 2

### Specificity and Sensitivity

PPP1R2 (Phospho-Ser120+Ser121) antibody detects endogenous levels of PPP1R2 only when phosphorylated at serine 120 and serine 121.

### Source and Purification

The antiserum was produced against synthesized phosphopeptide derived from human PPP1R2 around the phosphorylation site of serine 120 and serine 121 (Q-E-S<sup>P</sup>-S<sup>P</sup>-GE).

The antibody was affinity-purified from rabbit antiserum by affinity-chromatography using epitope-specific immunogen.

### Application Notes

Optimal working dilutions should be determined experimentally by the investigator. Suggested starting dilutions are as follows:

IHC: 1:50~1:100      ELISA: 1:5000

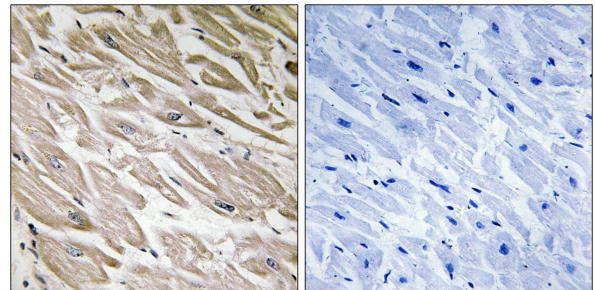
### Storage Buffer

Rabbit IgG in phosphate buffered saline (without Mg<sup>2+</sup> and Ca<sup>2+</sup>), pH 7.4, 150mM NaCl, 0.02% sodium azide and 50% glycerol.

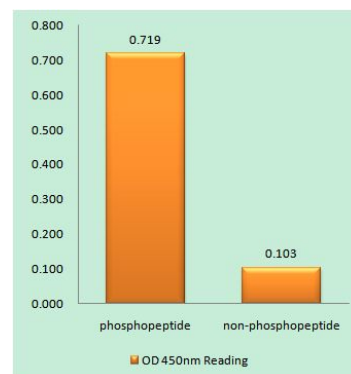
### Storage Instructions

Stable for 1 year at -20°C from date of shipment. For maximum recovery of product, centrifuge the original vial after thawing and prior to removing the cap. Aliquot to avoid repeated freezing and thawing. Aliquot will be stable at 4°C for 3 months.

### Images



P-peptide      -      +  
Immunohistochemistry analysis of paraffin-embedded human heart tissue using PPP1R2 (Phospho-Ser120+Ser121) antibody.



PPP1R2 (Phospho-Ser120+Ser121) antibody reacts with epitope-specific phosphopeptide and corresponding non-phosphopeptide. The absorbance readings at 450 nm are shown in the ELISA figure.