

Anti-TGF β Receptor II (Phospho-Ser225/250) Polyclonal Antibody



<u>Catalog No.</u>	<u>Size</u>
A100133-01	50 μ l
A100133-02	100 μ l

Specificity	Anti- TGF β Receptor II (Phospho-Ser225/250) (human mouse)
Source	Rabbit Polyclonal
Application	ELISA IHC
Form	Liquid, 1 mg/ml

Product

Swiss-Prot No.: P37173

Other Names: EC 2.7.11.30, TGF-beta receptor type II precursor, TGF-beta type II receptor, TGF-betaR2, TGFR-2, TGFR2, kinase TGF-beta-R2

Specificity and Sensitivity

TGF β Receptor II (Phospho-Ser225/250) antibody detects endogenous levels of TGF β Receptor II only when phosphorylated at serine 225/250.

Source and Purification

The antiserum was produced against synthesized phosphopeptide derived from human TGF β Receptor II around the phosphorylation site of serine 225/250 (D-R-S^P-D-I).

The antibody was affinity-purified from rabbit antiserum by affinity-chromatography using epitope-specific immunogen.

Application Notes

Optimal working dilutions should be determined experimentally by the investigator. Suggested starting dilutions are as follows:

IHC: 1:50~1:100 ELISA: 1:10000

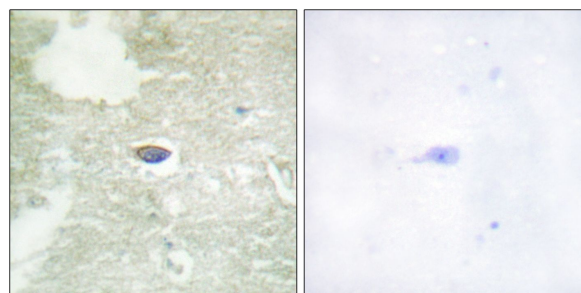
Storage Buffer

Rabbit IgG in phosphate buffered saline (without Mg²⁺ and Ca²⁺), pH 7.4, 150mM NaCl, 0.02% sodium azide and 50% glycerol.

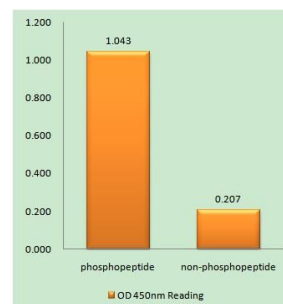
Storage Instructions

Stable for 1 year at -20°C from date of shipment. For maximum recovery of product, centrifuge the original vial after thawing and prior to removing the cap. Aliquot to avoid repeated freezing and thawing. Aliquot will be stable at 4°C for 3 months.

Images



P-peptide - +
Immunohistochemistry analysis of paraffin-embedded human brain tissue, using TGF β Receptor II (Phospho-Ser225/250) antibody.



TGF β Receptor II (Phospho-Ser225/250) antibody reacts with epitope-specific phosphopeptide and corresponding non-phosphopeptide. The absorbance readings at 450 nm are shown in the ELISA figure.