

Anti- TOP2A (Phospho-Ser1106) Polyclonal Antibody



<u>Catalog No.</u>	<u>Size</u>
A100135-01	50 µl
A100135-02	100 µl

Specificity	Anti- TOP2A (Phospho-Ser1106) (human mouse)
Source	Rabbit Polyclonal
Application	WB ELISA IHC
Form	Liquid, 1 mg/ml

Product

Swiss-Prot No.: P11388

Other Names: alpha isozyme; DNA topoisomerase II; DNA topoisomerase II-alpha; EC 5.99.1.3; P11388-1; TOP-2; TOP2; TOP2A; TP2A

Specificity and Sensitivity

TOP2A (Phospho-Ser1106) antibody detects endogenous levels of TOP2A only when phosphorylated at serine 1106.

Source and Purification

The antiserum was produced against synthesized phosphopeptide derived from human TOP2A around the phosphorylation site of serine 1106 (E-E-S^P-D-N). The antibody was affinity-purified from rabbit antiserum by affinity-chromatography using epitope-specific immunogen.

Application Notes

Optimal working dilutions should be determined experimentally by the investigator. Suggested starting dilutions are as follows:

WB: 1:500~1:3000 IHC: 1:50~1:100 ELISA: 1:1000

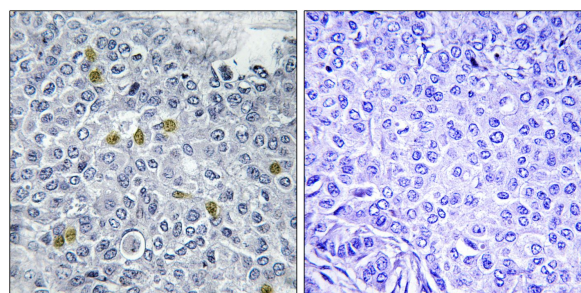
Storage Buffer

Rabbit IgG in phosphate buffered saline (without Mg²⁺ and Ca²⁺), pH 7.4, 150mM NaCl, 0.02% sodium azide and 50% glycerol.

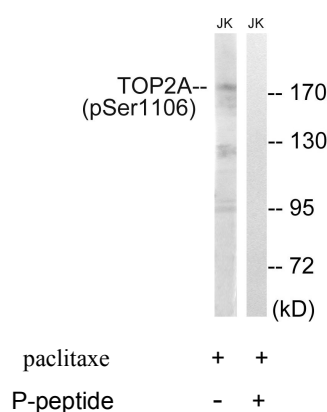
Storage Instructions

Stable for 1 year at -20°C from date of shipment. For maximum recovery of product, centrifuge the original vial after thawing and prior to removing the cap. Aliquot to avoid repeated freezing and thawing. Aliquot will be stable at 4°C for 3 months.

Images



P-peptide - +
Immunohistochemistry analysis of paraffin-embedded human breast carcinoma tissue using TOP2A (Phospho-Ser1106) antibody.



Western blot analysis of extracts from Jurkat cells, treated with paclitaxel (1µM, 24hours), using TOP2A (Phospho-Ser1106) antibody.