

Anti- MDM2 (Phospho-Ser186+Ser188) Polyclonal Antibody

Catalog No.	Size
A100140-01	50 µl
A100140-02	100 µl



Specificity	Anti- MDM2 (Phospho-Ser186+Ser188) (human)
Source	Rabbit Polyclonal
Application	ELISA IF
Form	Liquid, 1 mg/ml

Product

Swiss-Prot No.: Q00987

Other Names: Double minute 2 protein, EC 6.3.2.-, Oncoprotein Mdm2, Ubiquitin-protein ligase E3 Mdm2, p53-binding protein Mdm2

Specificity and Sensitivity

MDM2 (Phospho-Ser186+Ser188) antibody detects endogenous levels of MDM2 only when phosphorylated at serine 186 and serine 188.

Source and Purification

The antiserum was produced against synthesized phosphopeptide derived from human MDM2 around the phosphorylation site of serine 186 and serine 188 (H-K-S^P-D-S^P-I-S).

The antibody was affinity-purified from rabbit antiserum by affinity-chromatography using epitope-specific immunogen.

Application Notes

Optimal working dilutions should be determined experimentally by the investigator. Suggested starting dilutions are as follows:

IF: 1:100~1:500 ELISA: 1:20000

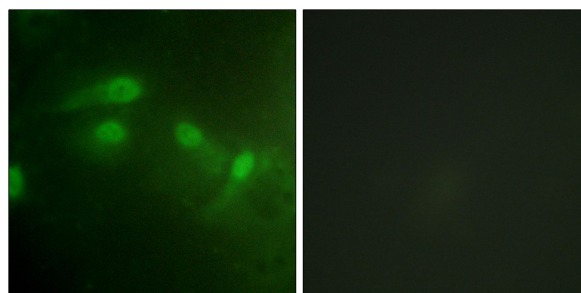
Storage Buffer

Rabbit IgG in phosphate buffered saline (without Mg²⁺ and Ca²⁺), pH 7.4, 150mM NaCl, 0.02% sodium azide and 50% glycerol.

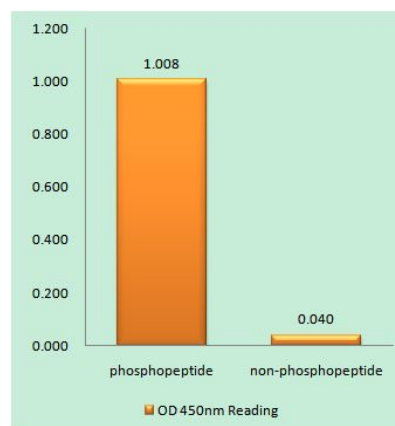
Storage Instructions

Stable for 1 year at -20°C from date of shipment. For maximum recovery of product, centrifuge the original vial after thawing and prior to removing the cap. Aliquot to avoid repeated freezing and thawing. Aliquot will be stable at 4°C for 3 months.

Images



P-peptide - +
Immunofluorescence analysis of HeLa cells, using MDM2 (Phospho-Ser186+Ser188) antibody.



MDM2 (Phospho-Ser186+Ser188) antibody reacts with epitope-specific phosphopeptide and corresponding non-phosphopeptide. The absorbance readings at 450 nM are shown in the ELISA figure.