

Anti-IGF2R (Phospho-Ser2409) Polyclonal Antibody



<u>Catalog No.</u>	<u>Size</u>
A100149-01	50 µl
A100149-02	100 µl

Specificity	Anti-IGF2R (Phospho-Ser2409) (human mouse)
Source	Rabbit Polyclonal
Application	WB ELISA IHC
Form	Liquid, 1 mg/ml

Product

Swiss-Prot No.: P11717

Other Names: 300 kDa mannose 6-phosphate receptor, CD222 antigen, CI Man-6-P receptor, CI-MPR, MPR 300, MPR300, MPRI, cation-independent mannose-6-phosphate receptor, insulin-like growth factor 2 receptor

Specificity and Sensitivity

IGF2R (Phospho-Ser2409) antibody detects endogenous levels of IGF2R only when phosphorylated at serine 2409.

Source and Purification

The antiserum was produced against synthesized phosphopeptide derived from human IGF2R around the phosphorylation site of serine 2409 (Q-D-S^P-E-D). The antibody was affinity-purified from rabbit antiserum by affinity-chromatography using epitope-specific immunogen.

Application Notes

Optimal working dilutions should be determined experimentally by the investigator. Suggested starting dilutions are as follows:

WB: 1:500~1:3000 IHC: 1:50~1:100 ELISA: 1:10000

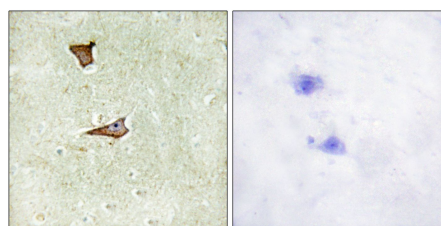
Storage Buffer

Rabbit IgG in phosphate buffered saline (without Mg²⁺ and Ca²⁺), pH 7.4, 150mM NaCl, 0.02% sodium azide and 50% glycerol.

Storage Instructions

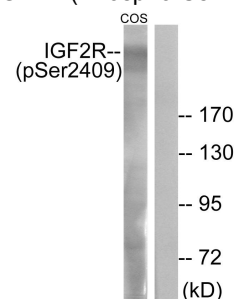
Stable for 1 year at -20°C from date of shipment. For maximum recovery of product, centrifuge the original vial after thawing and prior to removing the cap. Aliquot to avoid repeated freezing and thawing. Aliquot will be stable at 4°C for 3 months.

Images



P-peptide - +

Immunohistochemistry analysis of paraffin-embedded human brain tissue using IGF2R (Phospho-Ser2409) antibody.



UV + +
P-peptide - +

Western blot analysis of extracts from COS-7 cells, treated with UV (15mins), using IGF2R (Phospho-Ser2409) antibody.