

Anti- Period Circadian Protein 2 (Phospho-Ser662)



Polyclonal Antibody

Catalog No.	Size
A100150-01	50 µl
A100150-02	100 µl

Specificity	Anti- Period Circadian Protein 2 (Phospho-Ser662) (human mouse)
Source	Rabbit Polyclonal
Application	WB ELISA IHC
Form	Liquid, 1 mg/ml

Product

Swiss-Prot No.: O15055

Other Names: hPER2; KIAA0347; Period circadian protein 2

Specificity and Sensitivity

Period Circadian Protein 2 (Phospho-Ser662) antibody detects endogenous levels of Period Circadian Protein 2 only when phosphorylated at serine 662.

Source and Purification

The antiserum was produced against synthesized phosphopeptide derived from human Period Circadian Protein 2 around the phosphorylation site of serine 662 (A-E-S^P-V-A).

The antibody was affinity-purified from rabbit antiserum by affinity-chromatography using epitope-specific immunogen.

Application Notes

Optimal working dilutions should be determined experimentally by the investigator. Suggested starting dilutions are as follows:

WB: 1:500~1:3000 IHC: 1:50~1:100 ELISA: 1:5000

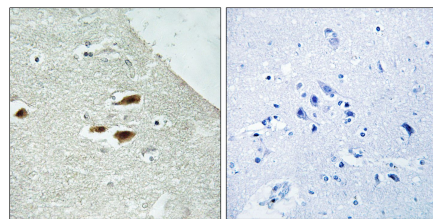
Storage Buffer

Rabbit IgG in phosphate buffered saline (without Mg²⁺ and Ca²⁺), pH 7.4, 150mM NaCl, 0.02% sodium azide and 50% glycerol.

Storage Instructions

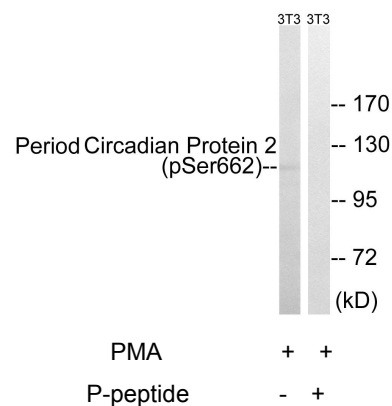
Stable for 1 year at -20°C from date of shipment. For maximum recovery of product, centrifuge the original vial after thawing and prior to removing the cap. Aliquot to avoid repeated freezing and thawing. Aliquot will be stable at 4°C for 3 months.

Images



P-peptide - +

Immunohistochemistry analysis of paraffin-embedded human brain tissue using Period Circadian Protein 2 (Phospho-Ser662) antibody.



Western blot analysis of extracts from 3T3 cells, treated with PMA (125ng/ml, 30mins), using Period Circadian Protein 2 (Phospho-Ser662) antibody.