

Anti-Proteasome $\alpha 3$ (Phospho-Ser250) Polyclonal



Antibody

Catalog No.	Size
A100152-01	50 μ l
A100152-02	100 μ l

Specificity	Anti- Proteasome $\alpha 3$ (Phospho-Ser250) (human mouse rat)
Source	Rabbit Polyclonal
Application	WB ELISA
Form	Liquid, 1 mg/ml

Product

Swiss-Prot No.: P25788

Other Names: EC 3.4.25.1; Macropain subunit C8; Multicatalytic endopeptidase complex subunit C8; proteasome component C8; Proteasome subunit alpha type 3; PSA3; PSC8

Specificity and Sensitivity

Proteasome $\alpha 3$ (Phospho-Ser250) antibody detects endogenous levels of Proteasome $\alpha 3$ only when phosphorylated at serine 250.

Source and Purification

The antiserum was produced against synthesized phosphopeptide derived from human Proteasome $\alpha 3$ around the phosphorylation site of serine 250 (D-E-S^P-D-D).

The antibody was affinity-purified from rabbit antiserum by affinity-chromatography using epitope-specific immunogen.

Application Notes

Optimal working dilutions should be determined experimentally by the investigator. Suggested starting dilutions are as follows:

WB: 1:500~1:3000 ELISA: 1:1000

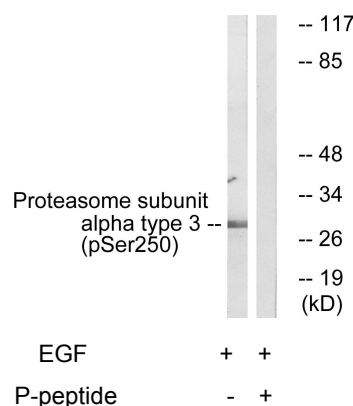
Storage Buffer

Rabbit IgG in phosphate buffered saline (without Mg²⁺ and Ca²⁺), pH 7.4, 150mM NaCl, 0.02% sodium azide and 50% glycerol.

Storage Instructions

Stable for 1 year at -20°C from date of shipment. For maximum recovery of product, centrifuge the original vial after thawing and prior to removing the cap. Aliquot to avoid repeated freezing and thawing. Aliquot will be stable at 4°C for 3 months.

Images



Western blot analysis of extracts from 3T3 cells, treated with EGF (200ng/ml, 30mins), using Proteasome $\alpha 3$ (Phospho-Ser250) antibody.