

Anti- Rho/Rac Guanine Nucleotide Exchange Factor 2 (Phospho-Ser885) Polyclonal Antibody



| Catalog No. | Size |
|-------------|--------|
| A100153-01 | 50 µl |
| A100153-02 | 100 µl |

| | |
|--------------------|---|
| Specificity | Anti- Rho/Rac Guanine Nucleotide Exchange Factor 2 (Phospho-Ser885) (human mouse) |
| Source | Rabbit Polyclonal |
| Application | WB ELISA |
| Form | Liquid, 1 mg/ml |

Product

Swiss-Prot No.: Q8TDA3

Other Names: GEF-H1, GEFH1, Guanine nucleotide exchange factor GEF-H1, proliferating cell nucleolar antigen p40, rho/rac guanine nucleotide exchange factor 2

Specificity and Sensitivity

Rho/Rac Guanine Nucleotide Exchange Factor 2 (Phospho-Ser885) antibody detects endogenous levels of Rho/Rac Guanine Nucleotide Exchange Factor 2 only when phosphorylated at serine 885.

Source and Purification

The antiserum was produced against synthesized phosphopeptide derived from human Rho/Rac Guanine Nucleotide Exchange Factor 2 around the phosphorylation site of serine 885 (R-R-S^P-L-P).

The antibody was affinity-purified from rabbit antiserum by affinity-chromatography using epitope-specific immunogen.

Application Notes

Optimal working dilutions should be determined experimentally by the investigator. Suggested starting dilutions are as follows:

WB: 1:500~1:3000 ELISA: 1:5000

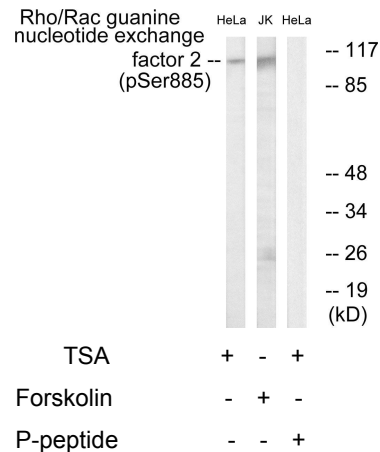
Storage Buffer

Rabbit IgG in phosphate buffered saline (without Mg²⁺ and Ca²⁺), pH 7.4, 150mM NaCl, 0.02% sodium azide and 50% glycerol.

Storage Instructions

Stable for 1 year at -20°C from date of shipment. For maximum recovery of product, centrifuge the original vial after thawing and prior to removing the cap. Aliquot to avoid repeated freezing and thawing. Aliquot will be stable at 4°C for 3 months.

Images



Western blot analysis of extracts from HeLa cells treated with TSA (400nM, 24hours) and Jurkat cells treated with forskolin(40nM, 30mins), using Rho/Rac Guanine Nucleotide Exchange Factor 2 (Phospho-Ser885) antibody.