

Anti-Syntaxin 1A (Phospho-Ser14) Polyclonal



Antibody

Catalog No.	Size
A100155-01	50 µl
A100155-02	100 µl

Specificity	Anti- Syntaxin 1A (Phospho-Ser14) (human mouse rat)
Source	Rabbit Polyclonal
Application	WB ELISA IF
Form	Liquid, 1 mg/ml

Product

Swiss-Prot No.: Q16623

Other Names: Neuron-specific antigen HPC-1, P35A, SAP, STX1, Synaptotagmin associated 35 kDa protein, syntaxin 1A

Specificity and Sensitivity

Syntaxin 1A (Phospho-Ser14) antibody detects endogenous levels of Syntaxin 1A only when phosphorylated at serine 14.

Source and Purification

The antiserum was produced against synthesized phosphopeptide derived from human Syntaxin 1A around the phosphorylation site of serine 14 (K-D-S^P-D-D).

The antibody was affinity-purified from rabbit antiserum by affinity-chromatography using epitope-specific immunogen.

Application Notes

Optimal working dilutions should be determined experimentally by the investigator. Suggested starting dilutions are as follows:

WB: 1:500~1:3000 IF: 1:100~1:500 ELISA: 1:1000

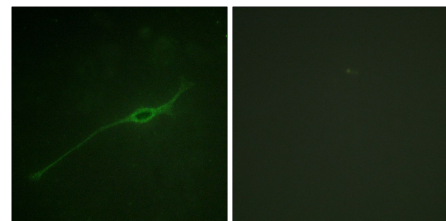
Storage Buffer

Rabbit IgG in phosphate buffered saline (without Mg²⁺ and Ca²⁺), pH 7.4, 150mM NaCl, 0.02% sodium azide and 50% glycerol.

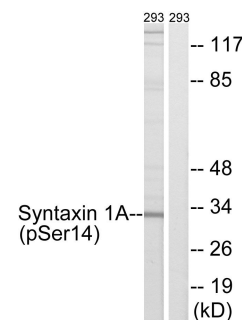
Storage Instructions

Stable for 1 year at -20°C from date of shipment. For maximum recovery of product, centrifuge the original vial after thawing and prior to removing the cap. Aliquot to avoid repeated freezing and thawing. Aliquot will be stable at 4°C for 3 months.

Images



P-peptide - +
Immunofluorescence analysis of NIH/3T3 cells, using Syntaxin 1A (Phospho-Ser14) antibody.



P-peptide - +
Western blot analysis of extracts from 293 cells, using Syntaxin 1A (Phospho-Ser14) antibody.