

Anti- Chk2 (Phospho-Thr68) Polyclonal Antibody



<u>Catalog No.</u>	<u>Size</u>
A100161-01	50 µl
A100161-02	100 µl

Specificity	Anti- Chk2 (Phospho-Thr68) (human mouse rat)
Source	Rabbit Polyclonal
Application	WB ELISA IHC
Form	Liquid, 1 mg/ml

Product

Swiss-Prot No.: O96017

Specificity and Sensitivity

Chk2 (Phospho-Thr68) Antibody detects endogenous levels of Chk2 only when phosphorylated at Threonine 68.

Source and Purification

The antiserum was produced against synthesized phosphopeptide derived from human Chk2 around the phosphorylation site of Threonine 68 (V-S-TP-Q-E).

The antibody was affinity-purified from rabbit antiserum by affinity-chromatography using epitope-specific immunogen.

Application Notes

Optimal working dilutions should be determined experimentally by the investigator. Suggested starting dilutions are as follows:

WB: 1:500~1:3000 IHC: 1:50~1:100 ELISA: 1:20000

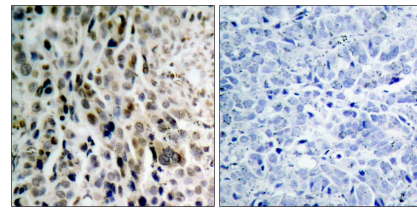
Storage Buffer

Rabbit IgG in phosphate buffered saline (without Mg²⁺ and Ca²⁺), pH 7.4, 150mM NaCl, 0.02% sodium azide and 50% glycerol.

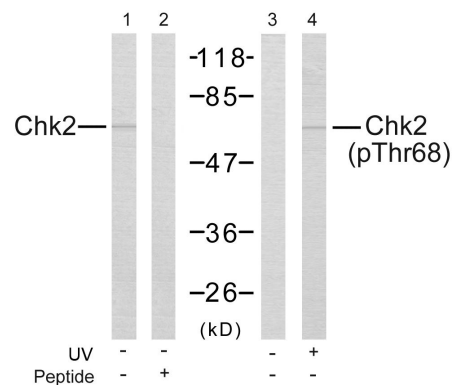
Storage Instructions

Stable for 1 year at -20°C from date of shipment. For maximum recovery of product, centrifuge the original vial after thawing and prior to removing the cap. Aliquot to avoid repeated freezing and thawing. Aliquot will be stable at 4°C for 3 months.

Images



P-peptide - +
Immunohistochemical analysis of paraffin- embedded lung carcinoma. Left: Using Chk2 (Phospho-Thr68) Antibody.



Western blot analysis of the extracts from Jurkat cells untreated or treated with UV using Chk2 (Ab-68) Antibody and Chk2 (Phospho-Thr68) Antibody.