

# Anti- Cortactin (Phospho-Tyr466) Polyclonal Antibody



<u>Catalog No.</u>	<u>Size</u>
A100163-01	50 µl
A100163-02	100 µl

<b>Specificity</b>	Anti- Cortactin (Phospho-Tyr466) (human mouse rat)
<b>Source</b>	Rabbit Polyclonal
<b>Application</b>	WB ELISA IHC
<b>Form</b>	Liquid, 1 mg/ml

## Product

**Swiss-Prot No.:** Q14247

**Other Names:** Amplaxin, CTTN, EMS1, Oncogene EMS1, SRC8, Src substrate cortactin

## Specificity and Sensitivity

Cortactin (phospho-Tyr466) antibody detects endogenous levels of Cortactin only when phosphorylated at tyrosine 466.

## Source and Purification

The antiserum was produced against synthesized phosphopeptide derived from human Cortactin around the phosphorylation site of tyrosine 466 (P-V-YP-E-T).

The antibody was affinity-purified from rabbit antiserum by affinity-chromatography using epitope-specific immunogen.

## Application Notes

Optimal working dilutions should be determined experimentally by the investigator. Suggested starting dilutions are as follows:

WB: 1:500~1:3000    IHC: 1:50~1:100    ELISA: 1:20000

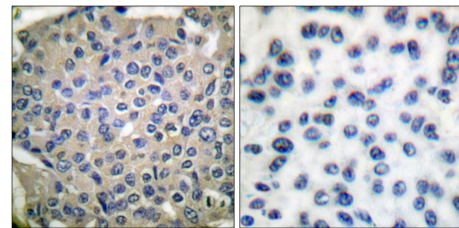
## Storage Buffer

Rabbit IgG in phosphate buffered saline (without Mg<sup>2+</sup> and Ca<sup>2+</sup>), pH 7.4, 150mM NaCl, 0.02% sodium azide and 50% glycerol.

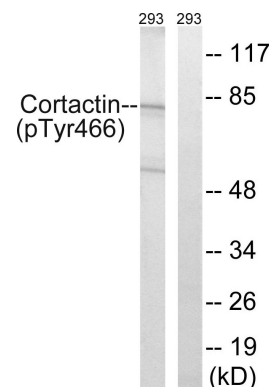
## Storage Instructions

Stable for 1 year at -20°C from date of shipment. For maximum recovery of product, centrifuge the original vial after thawing and prior to removing the cap. Aliquot to avoid repeated freezing and thawing. Aliquot will be stable at 4°C for 3 months.

## Images



P-peptide                    -                    +  
Immunohistochemical analysis of paraffin-embedded human breast carcinoma tissue, using Cortactin (phospho-Tyr466) antibody.



P-peptide                    -                    +  
Western blot analysis of extracts from 293 cells, using Cortactin (phospho-Tyr466) antibody.