

Anti- CREB (Phospho-Ser133) Polyclonal Antibody



<u>Catalog No.</u>	<u>Size</u>
A100164-01	50 µl
A100164-02	100 µl

Specificity	Anti- CREB (Phospho-Ser133) (human mouse rat)
Source	Rabbit Polyclonal
Application	WB ELISA IHC IP
Form	Liquid, 1 mg/ml

Product

Swiss-Prot No.: P16220

Specificity and Sensitivity

CREB (phospho-Ser133) antibody detects endogenous levels of CREB only when phosphorylated at serine 133.

Source and Purification

The antiserum was produced against synthesized phosphopeptide derived from human CREB around the phosphorylation site of serine 133 (R-P-SP-Y-R).

The antibody was affinity-purified from rabbit antiserum by affinity-chromatography using epitope-specific immunogen.

Application Notes

Optimal working dilutions should be determined experimentally by the investigator. Suggested starting dilutions are as follows:

WB: 1:500~1:3000	IHC: 1:50~1:100
ELISA: 1:10000	IP: Various Dilution

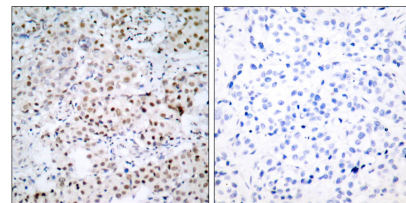
Storage Buffer

Rabbit IgG in phosphate buffered saline (without Mg²⁺ and Ca²⁺), pH 7.4, 150mM NaCl, 0.02% sodium azide and 50% glycerol.

Storage Instructions

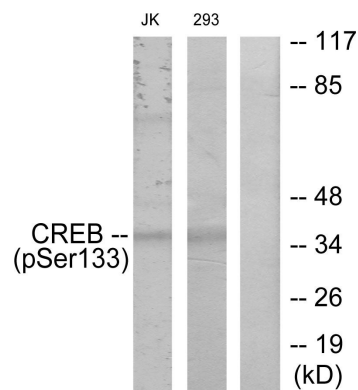
Stable for 1 year at -20°C from date of shipment. For maximum recovery of product, centrifuge the original vial after thawing and prior to removing the cap. Aliquot to avoid repeated freezing and thawing. Aliquot will be stable at 4°C for 3 months.

Images



P-peptide - +

Immunohistochemical analysis of paraffin-embedded human breast carcinoma tissue, using CREB (phospho-Ser133) antibody.



P-peptide - - +

Western blot analysis of extracts from JK cells and 293 cells, using CREB (phospho-Ser133) antibody.