

# Anti-G3BP-1 (Phospho-Ser232) Polyclonal Antibody



<u>Catalog No.</u>	<u>Size</u>
A100170-01	50 µl
A100170-02	100 µl

<b>Specificity</b>	Anti- G3BP-1 (Phospho-Ser232) (human)
<b>Source</b>	Rabbit Polyclonal
<b>Application</b>	WB ELISA IHC
<b>Form</b>	Liquid, 1 mg/ml

## Product

**Swiss-Prot No.:** Q13283

## Specificity and Sensitivity

G3BP-1 (phospho-Ser232) antibody detects endogenous levels of G3BP-1 only when phosphorylated at serine 232.

## Source and Purification

The antiserum was produced against synthesized phosphopeptide derived from human G3BP-1 around the phosphorylation site of serine 232 (S-S-SP-P-A).

The antibody was affinity-purified from rabbit antiserum by affinity-chromatography using epitope-specific immunogen.

## Application Notes

Optimal working dilutions should be determined experimentally by the investigator. Suggested starting dilutions are as follows:

WB: 1:500~1:3000    IHC: 1:50~1:100    ELISA: 1:1000

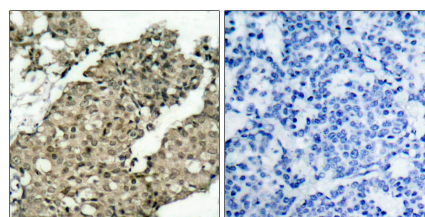
## Storage Buffer

Rabbit IgG in phosphate buffered saline (without Mg<sup>2+</sup> and Ca<sup>2+</sup>), pH 7.4, 150mM NaCl, 0.02% sodium azide and 50% glycerol.

## Storage Instructions

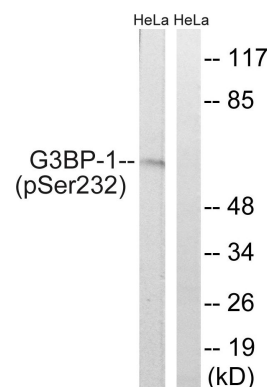
Stable for 1 year at -20°C from date of shipment. For maximum recovery of product, centrifuge the original vial after thawing and prior to removing the cap. Aliquot to avoid repeated freezing and thawing. Aliquot will be stable at 4°C for 3 months.

## Images



P-peptide                    -                    +

Immunohistochemical analysis of paraffin-embedded human breast carcinoma tissue, using G3BP-1 (phospho-Ser232) antibody.



P-peptide                    -                    +

Western blot analysis of extracts from HeLa cells, using G3BP-1 (phospho-Ser232) antibody.