

Anti-IRS-1 (Phospho-Ser312) Polyclonal Antibody



<u>Catalog No.</u>	<u>Size</u>
A100175-01	50 µl
A100175-02	100 µl

Specificity	Anti- IRS-1 (Phospho-Ser312) (human mouse rat)
Source	Rabbit Polyclonal
Application	WB ELISA IF
Form	Liquid, 1 mg/ml

Product

Swiss-Prot No.: P35568

Other Names: Insulin receptor substrate-1; IRS-1; IRS1

Specificity and Sensitivity

IRS-1 (Phospho-Ser312) antibody detects endogenous levels of IRS-1 only when phosphorylated at serine 312.

Source and Purification

The antiserum was produced against synthesized phosphopeptide derived from human IRS-1 around the phosphorylation site of serine 312 (A-T-S^P-P-A). The antibody was affinity-purified from rabbit antiserum by affinity-chromatography using epitope-specific immunogen.

Application Notes

Optimal working dilutions should be determined experimentally by the investigator. Suggested starting dilutions are as follows:

WB: 1:500~1:3000 IF: 1:100~1:500 ELISA: 1:20000

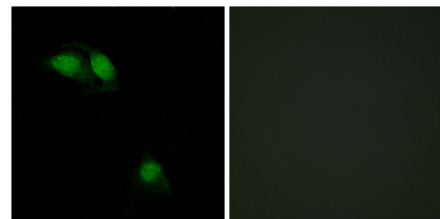
Storage Buffer

Rabbit IgG in phosphate buffered saline (without Mg²⁺ and Ca²⁺), pH 7.4, 150mM NaCl, 0.02% sodium azide and 50% glycerol.

Storage Instructions

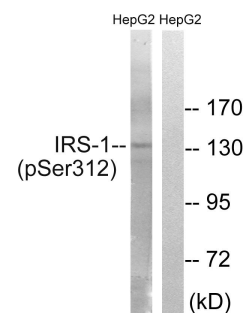
Stable for 1 year at -20°C from date of shipment. For maximum recovery of product, centrifuge the original vial after thawing and prior to removing the cap. Aliquot to avoid repeated freezing and thawing. Aliquot will be stable at 4°C for 3 months.

Images



P-peptide - +

Immunofluorescence analysis of HeLa cells, using IRS-1 (Phospho-Ser312) antibody.



P-peptide - +

Western blot analysis of extracts from HepG2 cells, using IRS-1 (Phospho-Ser312) antibody.