

Anti- c-Jun (Phospho-Ser243) Polyclonal Antibody



<u>Catalog No.</u>	<u>Size</u>
A100178-01	50 µl
A100178-02	100 µl

Specificity	Anti- c-Jun (Phospho-Ser243) (human mouse rat)
Source	Rabbit Polyclonal
Application	WB ELISA IHC IP
Form	Liquid, 1 mg/ml

Product

Swiss-Prot No.: P05412

Specificity and Sensitivity

c-Jun (phospho-Ser243) antibody detects endogenous levels of c-Jun only when phosphorylated at serine 243.

Source and Purification

The antiserum was produced against synthesized phosphopeptide derived from human c-Jun around the phosphorylation site of serine 243 (P-L-SP-P-I).

The antibody was affinity-purified from rabbit antiserum by affinity-chromatography using epitope-specific immunogen.

Application Notes

Optimal working dilutions should be determined experimentally by the investigator. Suggested starting dilutions are as follows:

WB: 1:500~1:3000	IHC: 1:50~1:100
ELISA: 1:20000	IP: Various Dilution

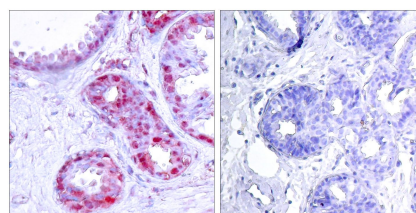
Storage Buffer

Rabbit IgG in phosphate buffered saline (without Mg²⁺ and Ca²⁺), pH 7.4, 150mM NaCl, 0.02% sodium azide and 50% glycerol.

Storage Instructions

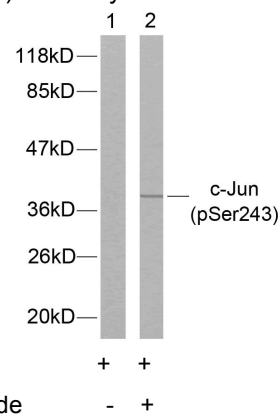
Stable for 1 year at -20°C from date of shipment. For maximum recovery of product, centrifuge the original vial after thawing and prior to removing the cap. Aliquot to avoid repeated freezing and thawing. Aliquot will be stable at 4°C for 3 months.

Images



P-peptide - +

Immunohistochemical analysis of paraffin-embedded human breast carcinoma tissue, using c-Jun (phospho-Ser243) antibody.



Western blot analysis of extracts from HeLa cells treated with UV, using c-Jun (phospho-Ser243) antibody.