

# Anti- JunB(Phospho-Ser79) Polyclonal Antibody



<u>Catalog No.</u>	<u>Size</u>
A100179-01	50 µl
A100179-02	100 µl

<b>Specificity</b>	Anti- JunB(Phospho-Ser79) (human mouse rat)
<b>Source</b>	Rabbit Polyclonal
<b>Application</b>	WB ELISA IP
<b>Form</b>	Liquid, 1 mg/ml

## Product

**Swiss-Prot No.:** P17275

## Specificity and Sensitivity

JunB (Phospho-Ser79) Antibody detects endogenous levels of JunB only when phosphorylated at Serine 79.

## Source and Purification

The antiserum was produced against synthesized phosphopeptide derived from human JunB around the phosphorylation site of Serine 79.

The antibody was affinity-purified from rabbit antiserum by affinity-chromatography using epitope-specific immunogen.

## Application Notes

Optimal working dilutions should be determined experimentally by the investigator. Suggested starting dilutions are as follows:

WB: 1:500~1:3000                      ELISA: 1:20000

IP: Various Dilution

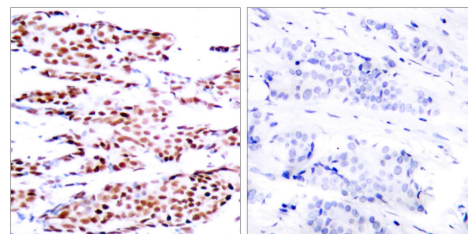
## Storage Buffer

Rabbit IgG in phosphate buffered saline (without  $Mg^{2+}$  and  $Ca^{2+}$ ), pH 7.4, 150mM NaCl, 0.02% sodium azide and 50% glycerol.

## Storage Instructions

Stable for 1 year at -20°C from date of shipment. For maximum recovery of product, centrifuge the original vial after thawing and prior to removing the cap. Aliquot to avoid repeated freezing and thawing. Aliquot will be stable at 4°C for 3 months.

## Images



P-peptide                      -                      +

Immunohistochemical analysis of paraffin-embedded breast carcinoma using JunB(Phospho-Ser79) Antibody.