

Anti- MKK6 (Phospho-Ser207) Polyclonal Antibody



<u>Catalog No.</u>	<u>Size</u>
A100182-01	50 µl
A100182-02	100 µl

Specificity	Anti- MKK6 (Phospho-Ser207) (human rat)
Source	Rabbit Polyclonal
Application	WB ELISA IHC
Form	Liquid, 1 mg/ml

Product

Swiss-Prot No.: P52564

Specificity and Sensitivity

MKK6 (Phospho-Ser207) Antibody detects endogenous levels of MKK6 only when phosphorylated at Serine207.

Source and Purification

The antiserum was produced against synthesized phosphopeptide derived from human MKK6 around the phosphorylation site of Serine207(V-D-SP-V-A).

The antibody was affinity-purified from rabbit antiserum by affinity-chromatography using epitope-specific immunogen.

Application Notes

Optimal working dilutions should be determined experimentally by the investigator. Suggested starting dilutions are as follows:

WB: 1:500~1:3000 IHC: 1:50~1:100 ELISA: 1:5000

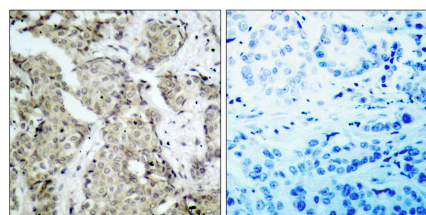
Storage Buffer

Rabbit IgG in phosphate buffered saline (without Mg²⁺ and Ca²⁺), pH 7.4, 150mM NaCl, 0.02% sodium azide and 50% glycerol.

Storage Instructions

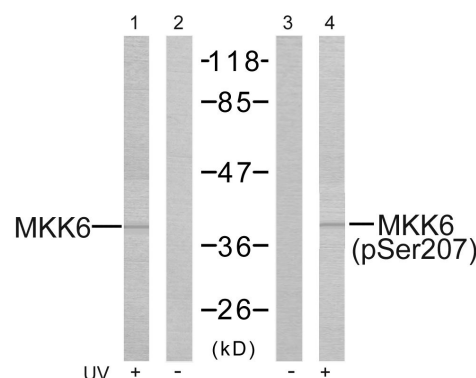
Stable for 1 year at -20°C from date of shipment. For maximum recovery of product, centrifuge the original vial after thawing and prior to removing the cap. Aliquot to avoid repeated freezing and thawing. Aliquot will be stable at 4°C for 3 months.

Images



P-peptide - +

Immunohistochemical analysis of paraffin- embedded breast carcinoma, using MKK6 (Phospho- Ser207) Antibody.



Western blot analysis of the extracts from MDA-MB-435 cells treated or untreated with UV using MKK3 (Ab-207) Antibody and MKK6 (Phospho-Ser207) Antibody.