

Anti-NF- κ B p105/p50 (Phospho-Ser893) Polyclonal



Antibody

Catalog No.	Size
A100184-01	50 μ l
A100184-02	100 μ l

Specificity	Anti- NF- κ B p105/p50 (Phospho-Ser893) (human)
Source	Rabbit Polyclonal
Application	WB ELISA IHC
Form	Liquid, 1 mg/ml

Product

Swiss-Prot No.: P19838

Specificity and Sensitivity

NF- κ B p105/p50 (phospho-Ser893) antibody detects endogenous levels of NF- κ B p105/p50 only when phosphorylated at serine 893.

Source and Purification

The antiserum was produced against synthesized phosphopeptide derived from human NF- κ B p105/p50 around the phosphorylation site of serine 893.

The antibody was affinity-purified from rabbit antiserum by affinity-chromatography using epitope-specific immunogen.

Application Notes

Optimal working dilutions should be determined experimentally by the investigator. Suggested starting dilutions are as follows:

WB: 1:500~1:3000 IHC: 1:50~1:100 ELISA: 1:20000

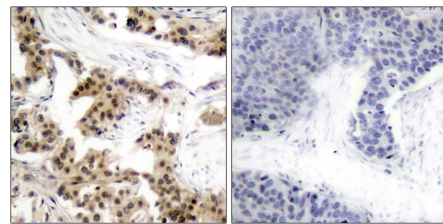
Storage Buffer

Rabbit IgG in phosphate buffered saline (without Mg²⁺ and Ca²⁺), pH 7.4, 150mM NaCl, 0.02% sodium azide and 50% glycerol.

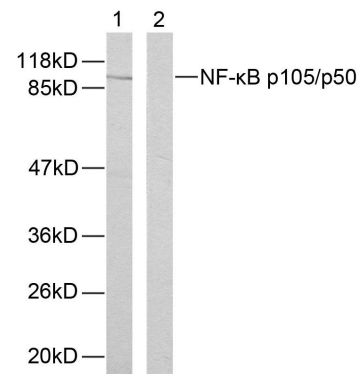
Storage Instructions

Stable for 1 year at -20°C from date of shipment. For maximum recovery of product, centrifuge the original vial after thawing and prior to removing the cap. Aliquot to avoid repeated freezing and thawing. Aliquot will be stable at 4°C for 3 months.

Images



P-peptide - +
Immunohistochemical analysis of paraffin-embedded human breast carcinoma tissue, using NF- κ B p105/p50 (phospho-Ser893) antibody.



P-peptide - +
Western blot analysis of extracts from HeLa cells, using NF- κ B p105/p50 (phospho-Ser893) antibody.