

Anti- SMC1 (Phospho-Ser957) Polyclonal Antibody



<u>Catalog No.</u>	<u>Size</u>
A100189-01	50 µl
A100189-02	100 µl

Specificity	Anti- SMC1 (Phospho-Ser957) (human mouse)
Source	Rabbit Polyclonal
Application	WB ELISA IHC
Form	Liquid, 1 mg/ml

Product

Swiss-Prot No.: Q14683

Other Names: Chromosome segregation protein SmcB; DXS423E; KIAA0178; Sb1.8; SB1.8/DXS423E protein; SM1A; SMC1A; SMC1alpha protein; SMC1L1; Structural maintenance of chromosome 1-like 1 protein

Specificity and Sensitivity

SMC1 (Phospho-Ser957) antibody detects endogenous levels of SMC1 only when phosphorylated at serine 957.

Source and Purification

The antiserum was produced against synthesized phosphopeptide derived from human SMC1 around the phosphorylation site of serine 957 (G-S-S^P-Q-G). The antibody was affinity-purified from rabbit antiserum by affinity-chromatography using epitope-specific immunogen.

Application Notes

Optimal working dilutions should be determined experimentally by the investigator. Suggested starting dilutions are as follows:

WB: 1:500~1:3000 IHC: 1:50~1:100 ELISA: 1:10000

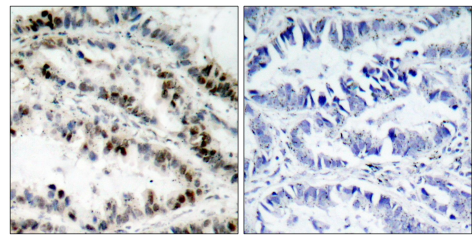
Storage Buffer

Rabbit IgG in phosphate buffered saline (without Mg²⁺ and Ca²⁺), pH 7.4, 150mM NaCl, 0.02% sodium azide and 50% glycerol.

Storage Instructions

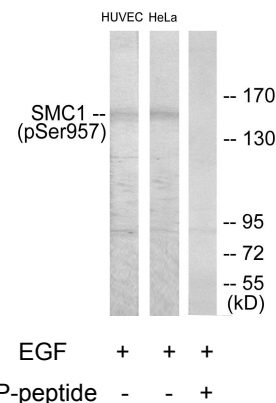
Stable for 1 year at -20°C from date of shipment. For maximum recovery of product, centrifuge the original vial after thawing and prior to removing the cap. Aliquot to avoid repeated freezing and thawing. Aliquot will be stable at 4°C for 3 months.

Images



P-peptide - +

Immunohistochemistry analysis of paraffin-embedded human lung carcinoma tissue, using SMC1 (Phospho-Ser957) antibody.



Western blot analysis of extracts from HUVEC cells treated with EGF (200ng/ml, 5mins) and HeLa cells treated with EGF (200ng/ml, 15mins), using SMC1 (Phospho-Ser957) antibody.