

Anti- STAT1 (Phospho-Ser727) Polyclonal Antibody



<u>Catalog No.</u>	<u>Size</u>
A100191-01	50 µl
A100191-02	100 µl

Specificity	Anti- STAT1 (Phospho-Ser727) (human mouse rat)
Source	Rabbit Polyclonal
Application	WB ELISA IHC
Form	Liquid, 1 mg/ml

Product

Swiss-Prot No.: P42224

Other Names: Signal transducer and activator of transcription 1; Signal transducer and activator of transcription 1-alpha/beta; Transcription factor ISGF-3 components p91/p84

Specificity and Sensitivity

STAT1 (Phospho-Ser727) antibody detects endogenous levels of STAT1 only when phosphorylated at serine 727.

Source and Purification

The antiserum was produced against synthesized phosphopeptide derived from human STAT1 around the phosphorylation site of serine 727 (P-M-S^P-P-E). The antibody was affinity-purified from rabbit antiserum by affinity-chromatography using epitope-specific immunogen.

Application Notes

Optimal working dilutions should be determined experimentally by the investigator. Suggested starting dilutions are as follows:

WB: 1:500~1:3000 IHC: 1:50~1:100 ELISA: 1:10000

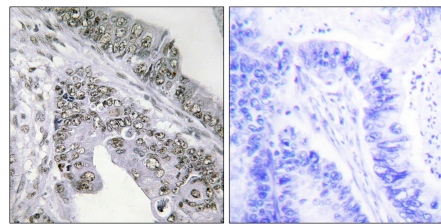
Storage Buffer

Rabbit IgG in phosphate buffered saline (without Mg²⁺ and Ca²⁺), pH 7.4, 150mM NaCl, 0.02% sodium azide and 50% glycerol.

Storage Instructions

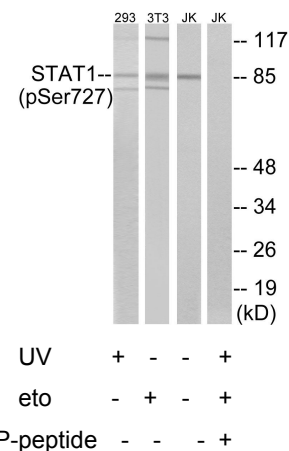
Stable for 1 year at -20°C from date of shipment. For maximum recovery of product, centrifuge the original vial after thawing and prior to removing the cap. Aliquot to avoid repeated freezing and thawing. Aliquot will be stable at 4°C for 3 months.

Images



P-peptide - +

Immunohistochemistry analysis of paraffin-embedded human colon carcinoma tissue using STAT1 (Phospho-Ser727) antibody.



Western blot analysis of extracts from 293 cells, 3T3 cells treated with UV (15mins) and Jurkat cells treated with eto (25uM, 24hours), using STAT1 (Phospho-Ser727) antibody.