

Anti-VEGFR2 (Phospho-Tyr1214) Polyclonal Antibody



<u>Catalog No.</u>	<u>Size</u>
A100198-01	50 µl
A100198-02	100 µl

Specificity	Anti- VEGFR2 (Phospho-Tyr1214) (human)
Source	Rabbit Polyclonal
Application	WB ELISA IHC
Form	Liquid, 1 mg/ml

Product

Swiss-Prot No.: P35968

Other Names: EC 2.7.10.1; FLK1; KDR; kinase insert domain receptor; protein-tyrosine kinase receptor Flk-1; vascular endothelial growth factor receptor 2; VGFR2; VGR2

Specificity and Sensitivity

VEGFR2 (Phospho-Tyr1214) antibody detects endogenous levels of VEGFR2 only when phosphorylated at tyrosine 1214.

Source and Purification

The antiserum was produced against synthesized phosphopeptide derived from human VEGFR2 around the phosphorylation site of tyrosine 1214 (F-H-Y^P-D-N). The antibody was affinity-purified from rabbit antiserum by affinity-chromatography using epitope-specific immunogen.

Application Notes

Optimal working dilutions should be determined experimentally by the investigator. Suggested starting dilutions are as follows:

WB: 1:500~1:3000 IHC: 1:50~1:100 ELISA: 1:10000

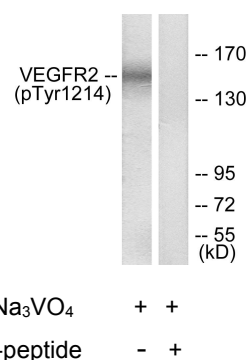
Storage Buffer

Rabbit IgG in phosphate buffered saline (without Mg²⁺ and Ca²⁺), pH 7.4, 150mM NaCl, 0.02% sodium azide and 50% glycerol.

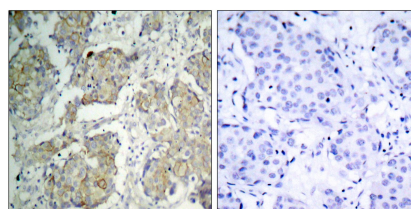
Storage Instructions

Stable for 1 year at -20°C from date of shipment. For maximum recovery of product, centrifuge the original vial after thawing and prior to removing the cap. Aliquot to avoid repeated freezing and thawing. Aliquot will be stable at 4°C for 3 months.

Images



Western blot analysis of extracts from HepG2 cells, treated with Na₃VO₄ (0.3nM, 40mins), using VEGFR2 (Phospho-Tyr1214) antibody.



P-peptide - +

Immunohistochemical analysis of paraffin-embedded human breast carcinoma tissue, using VEGFR2 (Phospho-Tyr1214) Antibody.