

# Anti-Caspase 8 (Phospho-Tyr380) Antibody



<u>Catalog No.</u>	<u>Size</u>
A100200-01	50 µl
A100200-02	100 µl

<b>Specificity</b>	Anti- Caspase 8 (Phospho-Tyr380) (human )
<b>Source</b>	Rabbit Polyclonal
<b>Application</b>	WB ELISA
<b>Form</b>	Liquid, 1 mg/ml

## Product

**Swiss-Prot No.:** Q14790

**Other Names:** Apoptotic cysteine protease; Apoptotic protease Mch-5; CAP4; Caspase-8 precursor; EC 3.4.22.-; EC 3.4.22.61; FADD-homologous ICE/CED-3- like protease; FADD-like ICE; FLICE; ICE-like apoptotic protease 5; ICE8; MACH; MCH5; MORT1-associated CED-3 homolog

## Specificity and Sensitivity

Caspase 8 (Phospho-Tyr380) antibody detects endogenous levels of Caspase 8 only when phosphorylated at tyrosine 380.

## Source and Purification

The antiserum was produced against synthesized phosphopeptide derived from human Caspase 8 around the phosphorylation site of tyrosine 380 (Q-P-YP-L-E). The antibody was affinity-purified by affinity-chromatography using epitope-specific immunogen.

## Application Notes

Optimal working dilutions should be determined experimentally by the investigator. Suggested starting dilutions are as follows:

WB 1:500-1:1000    ELISA 1:10000

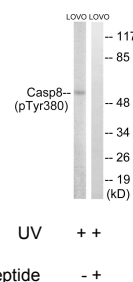
## Storage Buffer

Rabbit IgG in phosphate buffered saline (without Mg<sup>2+</sup> and Ca<sup>2+</sup>), pH 7.4, 150mM NaCl, 0.02% sodium azide and 50% glycerol.

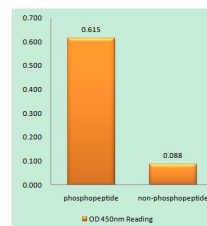
## Storage Instructions

Stable for 1 year at -20°C from date of shipment. For maximum recovery of product, centrifuge the original vial after thawing and prior to removing the cap. Aliquot to avoid repeated freezing and thawing. Aliquot will be stable at 4°C for 3 months.

## Images



Western blot analysis of extracts from LOVO cells, treated with UV (15mins), using Caspase 8 (Phospho-Tyr380) antibody.



Caspase 8 (Phospho-Tyr380) antibody reacts with epitope-specific phosphopeptide and corresponding non-phosphopeptide. The absorbance readings at 450 nM are shown in the ELISA figure.

## Related Products

- PW001: Super ECL Assay kit
- E030120 : HRP, Goat Anti-Rabbit IgG(H+L)
- E030220 : AP, Goat Anti-Rabbit IgG(H+L)
- E021010: Anti-GAPDH Mouse Monoclonal Antibody
- E021020: Anti-beta Actin Mouse Monoclonal Antibody
- E022330: Anti-His Tag Mouse Monoclonal Antibody-HRP