

Anti-CREB (Phospho-Thr100) Antibody



<u>Catalog No.</u>	<u>Size</u>
A100202-01	50 µl
A100202-02	100 µl

Specificity	Anti- CREB (Phospho-Thr100) (human mouse rat)
Source	Rabbit Polyclonal
Application	WB ELISA
Form	Liquid, 1 mg/ml

Product

Swiss-Prot No.: P16220

Other Names: cAMP responsive element binding protein 1; cAMP-response element binding protein; CREB-1; CREB1

Specificity and Sensitivity

CREB (Phospho-Thr100) antibody detects endogenous levels of CREB only when phosphorylated at threonine 100.

Source and Purification

The antiserum was produced against synthesized phosphopeptide derived from human CREB around the phosphorylation site of threonine 100 (S-G-TP-Q-I).

The antibody was affinity-purified by affinity-chromatography using epitope-specific immunogen.

Application Notes

Optimal working dilutions should be determined experimentally by the investigator. Suggested starting dilutions are as follows:

WB 1:500-1:1000 ELISA 1:20000

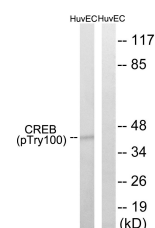
Storage Buffer

Rabbit IgG in phosphate buffered saline (without Mg^{2+} and Ca^{2+}), pH 7.4, 150mM NaCl, 0.02% sodium azide and 50% glycerol.

Storage Instructions

Stable for 1 year at -20°C from date of shipment. For maximum recovery of product, centrifuge the original vial after thawing and prior to removing the cap. Aliquot to avoid repeated freezing and thawing. Aliquot will be stable at 4°C for 3 months.

Images



etoposide + +
P-peptide - +

Western blot analysis of extracts from HUVEC cells, treated with etoposide (25uM, 24hours), using CREB (Phospho-Thr100) antibody.

Related Products

PW001: Super ECL Assay kit

E030120 : HRP, Goat Anti-Rabbit IgG(H+L)

E030220 : AP, Goat Anti-Rabbit IgG(H+L)

E021010: Anti-GAPDH Mouse Monoclonal Antibody

E021020: Anti-beta Actin Mouse Monoclonal Antibody

E022330: Anti-His Tag Mouse Monoclonal Antibody-HRP