

Anti-EGFR (Phospho-Ser1071) Antibody



<u>Catalog No.</u>	<u>Size</u>
A100205-01	50 µl
A100205-02	100 µl

Specificity	Anti- EGFR (Phospho-Ser1071) (human mouse rat)
Source	Rabbit Polyclonal
Application	WB ELISA
Form	Liquid, 1 mg/ml

Product

Swiss-Prot No.: P00533

Other Names: EC 2.7.10.1; epidermal growth factor receptor (erythroblastic leukemia viral (v-erb-b) oncogene homolog, avian); Epidermal growth factor receptor precursor; ERBB1; kinase EGFR; Receptor protein-tyrosine kinase ErbB-1

Specificity and Sensitivity

EGFR (Phospho-Ser1071) antibody detects endogenous levels of EGFR only when phosphorylated at serine 1071.

Source and Purification

The antiserum was produced against synthesized phosphopeptide derived from human EGFR around the phosphorylation site of serine 1071 (Y-S-SP-D-P).

The antibody was affinity-purified by affinity-chromatography using epitope-specific immunogen.

Application Notes

Optimal working dilutions should be determined experimentally by the investigator. Suggested starting dilutions are as follows:

WB 1:500-1:1000 ELISA 1:5000

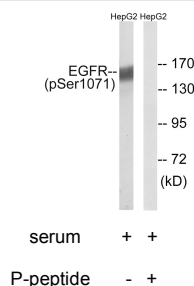
Storage Buffer

Rabbit IgG in phosphate buffered saline (without Mg²⁺ and Ca²⁺), pH 7.4, 150mM NaCl, 0.02% sodium azide and 50% glycerol.

Storage Instructions

Stable for 1 year at -20°C from date of shipment. For maximum recovery of product, centrifuge the original vial after thawing and prior to removing the cap. Aliquot to avoid repeated freezing and thawing. Aliquot will be stable at 4°C for 3 months.

Images



Western blot analysis of extracts from HepG2 cells, treated with serum (20%, 15mins), using EGFR (Phospho-Ser1071) antibody.

Related Products

PW001: Super ECL Assay kit

E030120 : HRP, Goat Anti-Rabbit IgG(H+L)

E030220 : AP, Goat Anti-Rabbit IgG(H+L)

E021010: Anti-GAPDH Mouse Monoclonal Antibody

E021020: Anti-beta Actin Mouse Monoclonal Antibody

E022330: Anti-His Tag Mouse Monoclonal Antibody-HRP