

# Anti-Ezrin (Phospho-Tyr478) Antibody



<u>Catalog No.</u>	<u>Size</u>
A100207-01	50 µl
A100207-02	100 µl

<b>Specificity</b>	Anti- Ezrin (Phospho-Tyr478) (human mouse rat)
<b>Source</b>	Rabbit Polyclonal
<b>Application</b>	WB ELISA
<b>Form</b>	Liquid, 1 mg/ml

## Product

**Swiss-Prot No.:** P15311

**Other Names:** Cytovillin; EZRI; p81; VIL2; Villin 2

## Specificity and Sensitivity

Ezrin (Phospho-Tyr478) antibody detects endogenous levels of Ezrin only when phosphorylated at tyrosine 478.

## Source and Purification

The antiserum was produced against synthesized phosphopeptide derived from human Ezrin around the phosphorylation site of tyrosine 478 (P-V-YP-E-P). The antibody was affinity-purified by affinity-chromatography using epitope-specific immunogen.

## Application Notes

Optimal working dilutions should be determined experimentally by the investigator. Suggested starting dilutions are as follows:

WB 1:500-1:1000    ELISA 1:1000

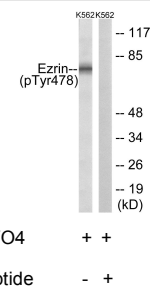
## Storage Buffer

Rabbit IgG in phosphate buffered saline (without Mg<sup>2+</sup> and Ca<sup>2+</sup>), pH 7.4, 150mM NaCl, 0.02% sodium azide and 50% glycerol.

## Storage Instructions

Stable for 1 year at -20°C from date of shipment. For maximum recovery of product, centrifuge the original vial after thawing and prior to removing the cap. Aliquot to avoid repeated freezing and thawing. Aliquot will be stable at 4°C for 3 months.

## Images



Lane 1: The extracts from K562 cells treated with Na3VO4 (0.3nM, 40mins) using Ezrin (Phospho-Tyr478) antibody.

Lane 2: The extracts from K562 cells treated with Na3VO4 (0.3nM, 40mins) plus phosphopeptide using Ezrin (Phospho-Tyr478) antibody.

## Related Products

PW001: Super ECL Assay kit

E030120 : HRP, Goat Anti-Rabbit IgG(H+L)

E030220 : AP, Goat Anti-Rabbit IgG(H+L)

E021010: Anti-GAPDH Mouse Monoclonal Antibody

E021020: Anti-beta Actin Mouse Monoclonal Antibody

E022330: Anti-His Tag Mouse Monoclonal Antibody-HRP