

# Anti-HSF1 (Phospho-Ser121) Antibody



<u>Catalog No.</u>	<u>Size</u>
A100211-01	50 µl
A100211-02	100 µl

<b>Specificity</b>	Anti- HSF1 (Phospho-Ser121) (human mouse)
<b>Source</b>	Rabbit Polyclonal
<b>Application</b>	WB IHC ELISA
<b>Form</b>	Liquid, 1 mg/ml

## Product

**Swiss-Prot No.:** Q00613

**Other Names:** Heat shock factor protein 1; Heat shock transcription factor 1; HSF 1; HSTF 1; HSTF1

## Specificity and Sensitivity

HSF1 (Phospho-Ser121) antibody detects endogenous levels of HSF1 only when phosphorylated at serine 121.

## Source and Purification

The antiserum was produced against synthesized phosphopeptide derived from human HSF1 around the phosphorylation site of serine 121 (V-T-SP-V-S).

The antibody was affinity-purified by affinity-chromatography using epitope-specific immunogen.

## Application Notes

Optimal working dilutions should be determined experimentally by the investigator. Suggested starting dilutions are as follows:

WB 1:500-1:1000 IHC 1:50~1:100 ELISA 1:20000

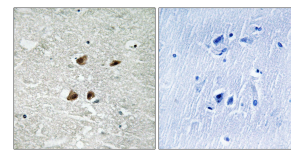
## Storage Buffer

Rabbit IgG in phosphate buffered saline (without Mg<sup>2+</sup> and Ca<sup>2+</sup>), pH 7.4, 150mM NaCl, 0.02% sodium azide and 50% glycerol.

## Storage Instructions

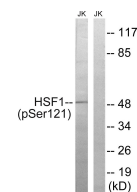
Stable for 1 year at -20°C from date of shipment. For maximum recovery of product, centrifuge the original vial after thawing and prior to removing the cap. Aliquot to avoid repeated freezing and thawing. Aliquot will be stable at 4°C for 3 months.

## Images



P-peptide - +

Immunohistochemistry analysis of paraffin-embedded human brain tissue using HSF1 (Phospho-Ser121) antibody.



TNF ++

P-peptide - +

Western blot analysis of extracts from Jurkat cells, treated with TNF (2500U/ML, 30mins), using HSF1 (Phospho-Ser121) antibody.

## Related Products

PW001: Super ECL Assay kit

E030120 : HRP, Goat Anti-Rabbit IgG(H+L)

E030220 : AP, Goat Anti-Rabbit IgG(H+L)

E021010: Anti-GAPDH Mouse Monoclonal Antibody

E021020: Anti-beta Actin Mouse Monoclonal Antibody

E022330: Anti-His Tag Mouse Monoclonal Antibody-HRP