

Anti-IGF1R (Phospho-Tyr1346) Antibody



<u>Catalog No.</u>	<u>Size</u>
A100212-01	50 µl
A100212-02	100 µl

Specificity	Anti- IGF1R (Phospho-Tyr1346) (human mouse rat)
Source	Rabbit Polyclonal
Application	IHC ELISA
Form	Liquid, 1 mg/ml

Product

Swiss-Prot No.: P08069

Other Names: CD221; EC 2.7.10.1; IGF1R; Insulin-like growth factor I receptor precursor; kinase IGF1R

Specificity and Sensitivity

IGF1R (Phospho-Tyr1346) antibody detects endogenous levels of IGF1R only when phosphorylated at tyrosine 1346.

Source and Purification

The antiserum was produced against synthesized phosphopeptide derived from human IGF1R around the phosphorylation site of tyrosine 1346 (Q-P-YP-A-H).

The antibody was affinity-purified by affinity-chromatography using epitope-specific immunogen.

Application Notes

Optimal working dilutions should be determined experimentally by the investigator. Suggested starting dilutions are as follows:

IHC 1:50-1:100 ELISA 1:40000

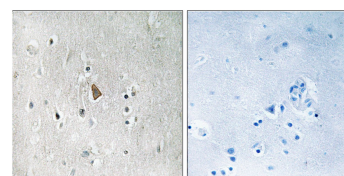
Storage Buffer

Rabbit IgG in phosphate buffered saline (without Mg²⁺ and Ca²⁺), pH 7.4, 150mM NaCl, 0.02% sodium azide and 50% glycerol.

Storage Instructions

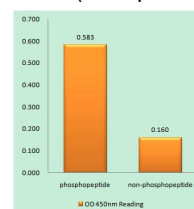
Stable for 1 year at -20°C from date of shipment. For maximum recovery of product, centrifuge the original vial after thawing and prior to removing the cap. Aliquot to avoid repeated freezing and thawing. Aliquot will be stable at 4°C for 3 months.

Images



P-peptide - +

Immunohistochemistry analysis of paraffin-embedded human brain tissue, using IGF1R (Phospho-Tyr1346) antibody.



IGF1R (Phospho-Tyr1346) antibody reacts with epitope-specific phosphopeptide and corresponding non-phosphopeptide. The absorbance readings at 450 nM are shown in the ELISA figure.

Related Products

PW001: Super ECL Assay kit

E030120 : HRP, Goat Anti-Rabbit IgG(H+L)

E030220 : AP, Goat Anti-Rabbit IgG(H+L)

E021010: Anti-GAPDH Mouse Monoclonal Antibody

E021020: Anti-beta Actin Mouse Monoclonal Antibody

E022330: Anti-His Tag Mouse Monoclonal Antibody-HRP